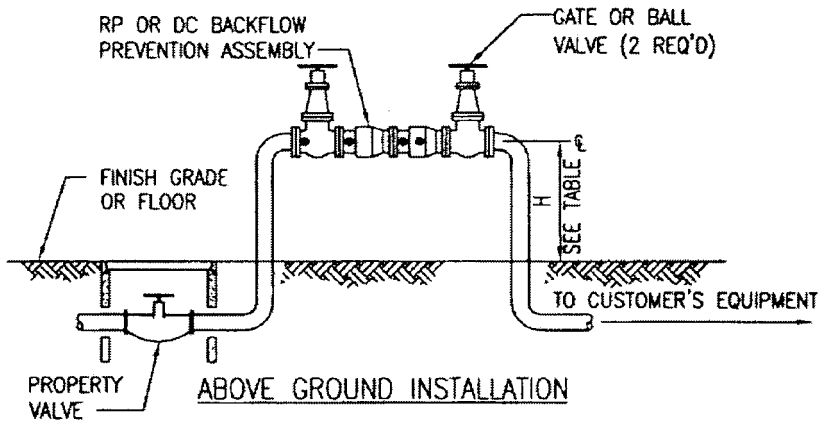
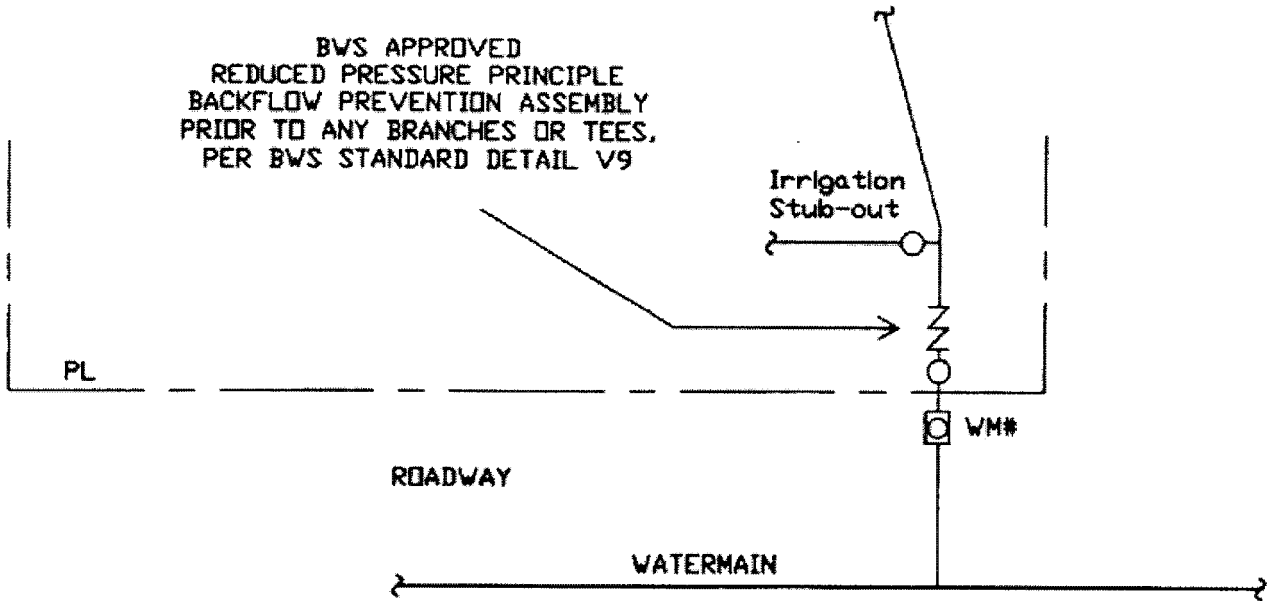


TYPICAL BFPA INSTALLATION DETAIL PLAN VIEW

(Tracing Inclusion Required)



SIZE (INCHES)	H (INCHES)
3/4 TO 1-1/2	18
2 TO 3	24
4 TO 6	30
8 TO 10	36

Note:

1. The backflow prevention assembly must be installed after the meter and the property valve prior to any branches or tees.
2. The plans must also reflect the following callout, "**BOARD OF WATER SUPPLY APPROVED REDUCED PRESSURE PRINCIPLE BACKFLOW PREVENTION ASSEMBLY**" or "**BOARD OF WATER SUPPLY APPROVED DOUBLE CHECK BACKFLOW PREVENTION ASSEMBLY**" or refer to a specific make and model of a Board of Water Supply approved backflow prevention assembly. (Whichever is applicable)
3. At no time shall the bottom of the assembly be less than 12 inches above ground, floor, or flood level nor more than 48 inches above aforementioned grades.
4. The plans must show the backflow prevention assembly in relation to the water meter, property valve, and any branches in the vicinity.

Any questions, call Board of Water Supply, Cross Connection Control Unit at 748-5470.