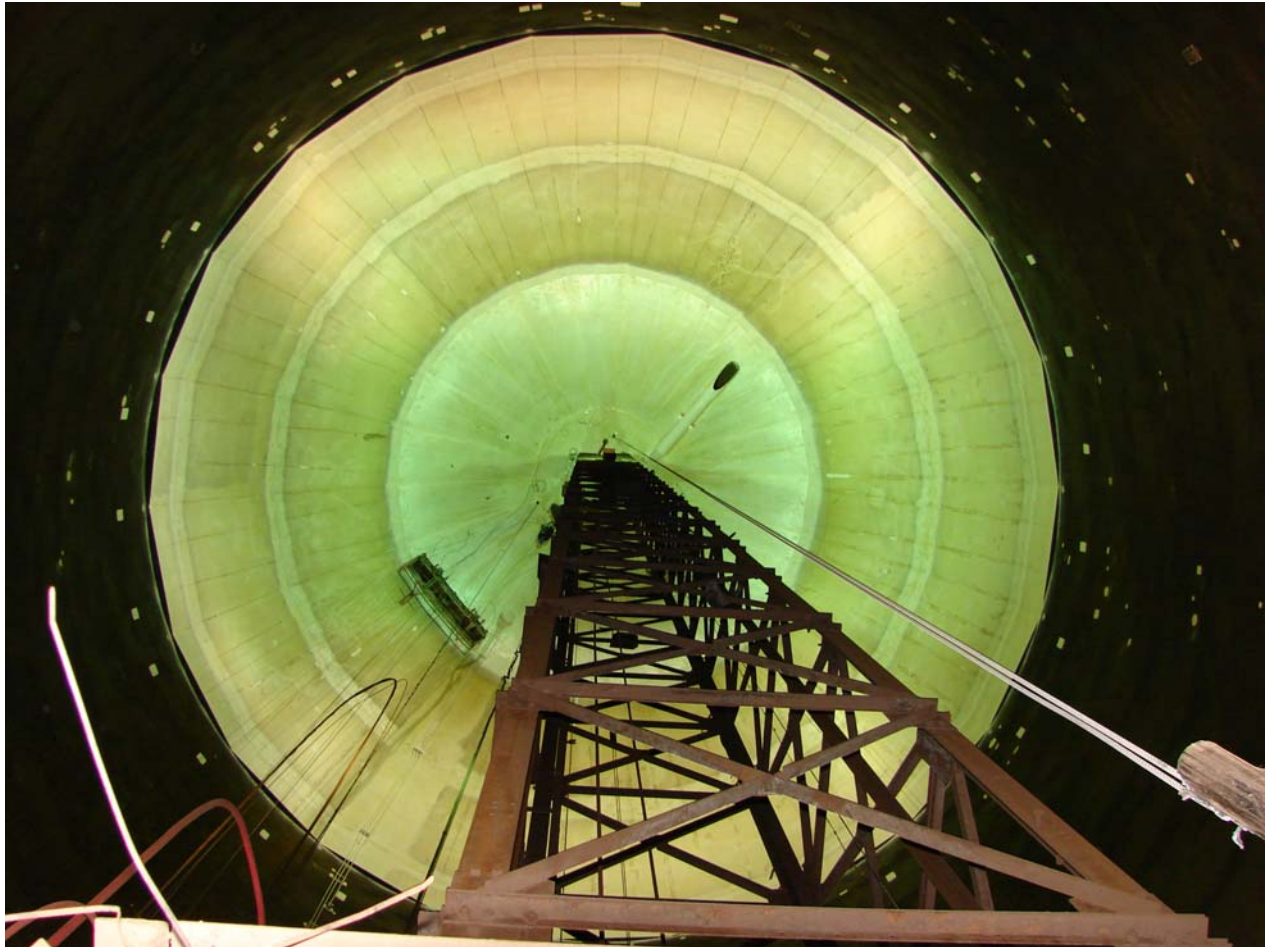


CONTRACT NUMBER N62742-03-C-1402  
CLEAN AND REPAIR TANKS 1, 6, 15, AND 16, AT RED HILL  
FLEET AND INDUSTRIAL SUPPLY CENTER, PEARL HARBOR, HAWAII

## Report On Tank 6 As Built Repairs

June, 2007



**Tank 6 Lower Dome**

## **Summary**

This report is to document Tank 6 weld repairs completed May 2007 and coating by Duncan & Bush, Inc. Repairs were completed in accordance with Section 2.3 Recommendations of the API 653 Inspection Report by Weston Solutions dated May, 2006. Repairs and modifications recommended in the API 653 Inspection Report are summarized below.

### **Repairs based on API 653 Report Recommendations**

1. Install 192 patch plates to repair flaws listed in table 2-1 Patch Plate and Weld Repair Summary.
2. Perform 269 weld repairs on weld flaws listed in table 2-1 Patch Plate and Weld Repair Summary.
3. Perform 8 additional coating repairs as listed in table 2-1 Patch Plate and Weld Repair Summary.
4. Perform vacuum box testing on 57 flaws listed in table 2-1 Patch Plate and Weld Repair Summary.
5. Perform MT testing at 2 locations listed in table 2-1 Patch Plate and Weld Repair Summary.
6. Replace existing supports for the 18" line at the tank bottom.
7. Weld repair approximately 40 feet of circumferential butt weld inside the 32" line at the tank bottom, repair flange weld in lower tunnel, remove ¾" internal line, and perform hydrostatic testing.
8. Repair ¾" sample lines per the repair drawing in Appendix D.
9. Coat patch plates, weld repairs, grout nozzles, expansion joint, most of the lower dome and portions of the upper dome.

### **Other Repairs**

Other repairs were completed as directed by the government based on results of contract specified testing / inspection, and user requests. These other repairs include:

1. Removal, repair, and retesting of the existing slop line including supply and installation of a new 6" block valve.
2. Structural repairs to the central tower (weld repairs and replacement of fasteners).
3. Complete replacement of sample lines & valves from the lower tunnel into the tank and to the 200 foot level inside the tank.
4. Removal of the counterweight tube, float, tape, guy wires, and attachments.
5. Removal of central tower elevator cage and steps & landing at the tower base.
6. Installation of datum plate (as directed by Weston Solutions).
7. Removal and replacement of a section of stairs and stair railing repairs.

These repairs are summarized and described in this report.

**CONTRACT NUMBER N62742-03-C-1402  
CLEAN AND REPAIR TANKS 1, 6, 15, AND 16, AT RED HILL  
FLEET AND INDUSTRIAL SUPPLY CENTER, PEARL HARBOR, HAWAII**

## **Table of Contents**

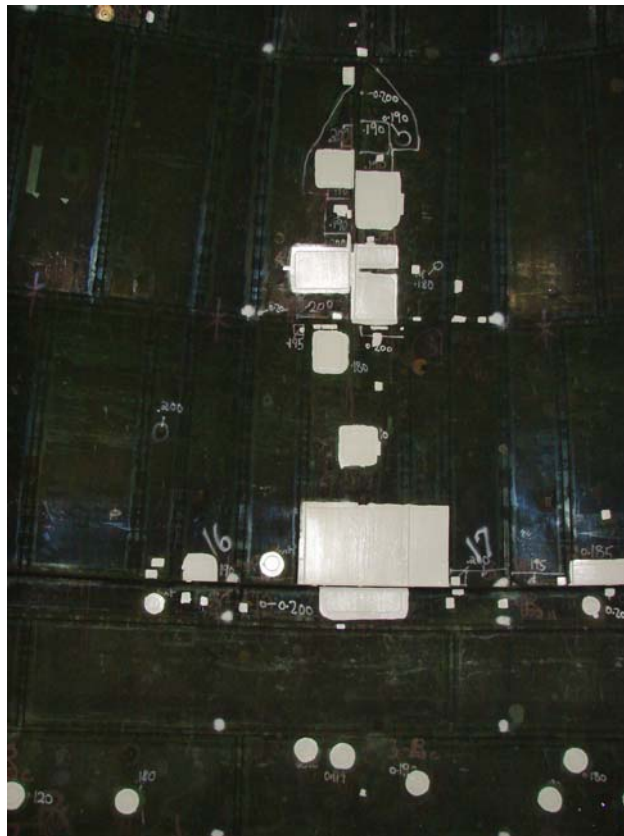
<b>Section 1</b>	<b>Summary of weld and patch plate repairs</b>
<b>Section 2</b>	<b>Removal of unused anchors, clips, and angles at tank bottom</b>
<b>Section 3</b>	<b>Replacement of 18” line supports at tank bottom</b>
<b>Section 4</b>	<b>Repair of 32” line internal circumferential joints</b>
<b>Section 5</b>	<b>Coating repairs</b>
<b>Section 6</b>	<b>Other repairs</b>

## Section 1

### Summary of weld and patch plate repairs

The table in the appendix summarizes the patch plate and weld repairs specified and detailed by Weston Solutions in the May, 2006 API 653 Inspection Report. All weld repairs were inspected, tested, and documented by LKS, Inc. a third party independent testing firm. Weld repairs requiring rework were repaired and re tested until they were found to be acceptable.

192 patch plate repairs covering flaws and 269 weld joint repairs are documented along with 57 vacuum box tests of flaws. Each patch plate / insert and weld repair has been assigned a Dunkin & Bush repair number. Dunkin & Bush also assigned a unique number to each of the flaws identified for repair by Weston Solutions to keep flaw numbers in sequence. The Dunkin & Bush flaw numbers are referenced in the LKS, Inc. test reports.



Typical patch plate repairs

QUAD	D&B NO.	TANK SECTION	ROW	Plate # or V DROP	Weston FLAW #	PATCH TYPE	WELDER & Date	Person in Basket	Time (Min)	COMMENTS	DATE OF			
											DYE CHEC	VAC BOX	COATING	
A	600	Barrel	26	12	677	10" x 10" see sketch	Philip-6/29/06	Reed	70		8/16/06	8/16/06		
A	601	Extension	E-2	20	650	10" x 12" see sketch	Philip-7/3/06	Calvin	65		8/17/06	8/17/06		
A	602	Upper Dome	A	A-26	669	10" x 14" see sketch	Philip-7/3/06	Calvin	60		7/19/06	7/19/06	9/13/06	9/13/06
A	603	Upper Dome	A	A-45	578	10" x 32" see sketch	Philip-7/5/06	Reed	115		8/30/06	8/30/06		
A	same as 603	Upper Dome	A	A-45	579	Repair with flaw No. 578	Philip-7/5/06	same	same					
A	same as 603	Upper Dome	A	A-45	580	Repair with flaw No. 578	Philip-7/5/06	same	same					
A	604	Upper Dome	B	B-31	619	14" x 18" see sketch	Philip-7/13/06		90		8/17/06	8/17/06		
A	605	Upper Dome	A	A-44	577	14" x 31" see sketch	Philip-7/5/06	Reed	120		8/17/06	8/17/06		
A	606	Upper Dome	B	B-31	620	16" x 18" see sketch	Philip-7/18/06	Calvin		Started the 18th ended the 20th	8/17/06	8/17/06	9/13/06	
A	607	Upper Dome	A	A-35	672	16" x 18" see sketch	Philip-7/13/06		85		8/30/06	8/30/06	9/13/06	
A	608	Extension	E-1	14	670	16" x 24" see sketch	Philip-7/13/06		90		8/23/06	8/23/06		
A	609	Lower Dome	LD-1	9 & 10	1	4" x 6"	x	x	x		10/9/06	10/9/06		
A	610	Lower Dome	LD-1	10 & 11	2	4" x 6"	x	x	x		10/9/06	10/9/06		

QUAD	D&B NO.	TANK SECTION	ROW	Plate # or V DROP	Weston FLAW #	PATCH TYPE	WELDER & Date	Person in Basket	Time (Min)	COMMENTS	DATE OF		
											DYE CHEC	VAC BOX	COATING
A	611	Lower Dome	LD-1	5 & 6	38	4" x 6"	x	x			10/9/06	10/9/06	
A	612	Lower Dome	LD-1	6 & 7	39	4" x 6"	x	x			10/9/06	10/9/06	
A	613	Lower Dome	LD-1	8 & 9	40	4" x 6"	x	x			10/9/06	10/9/06	
A	614	Upper Dome	C	C-21	634	6" see sketch	Philip-7/18/06		20		7/31/06	7/31/06	9/13/06
A	615	Barrel	27	14	321	6" round	Philip-7/3/06	Calvin	23		8/16/06	8/16/06	
A	616	Barrel	24	15	358	6" round	Philip-7/3/06	Calvin	25		8/17/06	8/17/06	
A	617	Upper Dome	B	B-21	614	6" round	Philip-7/3/06	Calvin	20		7/31/06	7/31/06	9/13/06
A	618	Upper Dome	B	B-23	615	6" round	Philip-7/3/06	Calvin	20		7/31/06	7/31/06	9/13/06
A	619	Upper Dome	B	B-23	616	6" round	Philip-7/3/06	Calvin	20		7/31/06	7/31/06	9/13/06
A	620	Upper Dome	B	B-28	618	6" round	Philip-7/3/06	Calvin	20		7/31/06	7/31/06	9/13/06
A	621	Upper Dome	B	B-30	621	6" round	Philip-7/13/06		15		7/31/06	7/13/06	9/13/06
A	622	Upper Dome	B	B-30	622	6" round	Philip-6/27/06	Todd	30		7/13/06	7/13/06	9/13/06
A	623	Upper Dome	B	B-30	623	6" round	Philip-6/27/06	Todd	30		8/23/06	8/23/06	9/13/06

QUAD	D&B NO.	TANK SECTION	ROW	Plate # or V DROP	Weston FLAW #	PATCH TYPE	WELDER & Date	Person in Basket	Time (Min)	COMMENTS	DATE OF		
											DYE CHEC	VAC BOX	COATING
A	624	Upper Dome	B	B-33	624	6" round	Philip-7/13/06		30		8/23/06	8/23/06	9/13/06
A	625	Upper Dome	B	B-28	631	6" round	Philip-7/13/06		25		7/31/06	7/31/06	
A	626	Upper Dome	C	C-32	632	6" round	Philip-7/13/06		30		7/31/06	7/31/06	9/13/06
A	627	Upper Dome	C	C-22	635	6" round	Philip-7/17/06		25		7/31/06	7/31/06	9/13/06
A	628	Upper Dome	A	A-47	645	6" x 12" see sketch					8/23/06	8/23/06	
A	629	Extension	E-2	14	533	6" x 8" see sketch	Hugo-7/6/06	Todd	30		7/19/06	7/19/06	
A	630	Extension	E-2	19	649	8" round	Philip-7/18/06		30		8/17/06	8/17/06	
A	631	Upper Dome	A	A-35	671	8" x 10" see sketch	Philip-7/6/06	Calvin	50		7/19/06	7/19/06	9/13/06
B	632	Upper Dome	A	A-21	518	10" x 20" see sketch	Philip-7/6/06	Calvin	90		7/19/06	7/19/06	9/13/06
B	633	Extension	E-4	5	112	14" x 16" see sketch	Philip-7/5/06	Reed	85		7/19/06	7/19/06	
B	634	Barrel	2	7	653	14" x 20" see sketch	Philip-7/5/06	Reed	70		7/19/06	7/19/06	
B	635	Extension	E-4	9	193	14" x 41" see sketch	Philip-7/6/06	Calvin	205		9/6/06	9/6/06	
B	same as 635	Extension	E-4	9	659	Repair with flaw No. 193	Philip-7/6/06	same	same				

QUAD	D&B NO.	TANK SECTION	ROW	Plate # or V DROP	Weston FLAW #	PATCH TYPE	WELDER & Date	Person in Basket	Time (Min)	COMMENTS	DATE OF		
											DYE CHEC	VAC BOX	COATING
B	636	Extension	E-2	10	666	16" x 20" see sketch	Philip-7/12/06	Reed	60		7/19/06	7/19/06	9/13/06
B	637	Extension	E-1	8	654	16" x 36" see sketch	Philip-7/13/06		120		8/30/06	8/30/06	
B	638	Extension	E-2	10	662	20" x 56" see sketch	Philip-7/12/06		210		8/30/06	8/30/06	
B	same as 638	Extension	E-2	10	663	Repair with flaw No. 662	x-Hugo	x					
B	639	Barrel	A	A-3	426	24" x 32" see sketch	Philip-7/12/06		125		7/19/06	7/19/06	
B	640	Lower Dome	LD-1	11 & 12	3	4" x 6"	x-Hugo	x			10/9/06	10/9/06	
B	641	Lower Dome	LD-1	13 & 14	4	4" x 6"	x-Hugo	x			10/9/06	10/9/06	
B	642	Lower Dome	LD-1	14 & 15	5	4" x 6"	x-Hugo	x			10/9/06	10/9/06	
B	643	Lower Dome	LD-1	16 & 17	7	4" x 6"	x-Hugo	x			10/9/06	10/9/06	
B	644	Lower Dome	LD-1	17 & 18	8	4" x 6"	x-Hugo	x			10/9/06	10/9/06	
B	645	Lower Dome	LD-1	19 & 20	10	4" x 6"	x-Hugo	x			10/9/06	10/9/06	
B	646	Lower Dome	LD-1	20 & 21	11	4" x 6"	x-Hugo	x			10/9/06	10/9/06	
B	647	Lower Dome	LD-1	21 & 22	12	4" x 6"	x-Hugo	x			10/9/06	10/9/06	



QUAD	D&B NO.	TANK SECTION	ROW	Plate # or V DROP	Weston FLAW #	PATCH TYPE	WELDER & Date	Person in Basket	Time (Min)	COMMENTS	DATE OF			
											DYE CHEC	VAC BOX	COATING	
B	648	Extension	E-3	1	429	6" see sketch	Philip-7/17/06		40		7/19/06	7/19/06		
B	649	Upper Dome	A	A-13	438	6" see sketch	Philip-7/17/06		35		7/19/06	7/19/06	9/13/06	
B	650	Extension	E-3	5	441	6" see sketch	Philip-7/17/06		25		7/19/06	7/19/06		
B	651	Upper Dome	B	B-11	651	6" see sketch	Philip-7/18/06		30		7/31/06	7/31/06	9/13/06	
B	652	Barrel	10	6	135	6" round	Philip-7/3/06	Calvin	20		8/2/06	8/2/06		
B	653	Barrel	25	7	140	6" round	Philip-7/3/06	Calvin	25		8/23/06	8/23/06		
B	654	Barrel	16	8	173	6" round	Philip-7/3/06	Calvin	20		8/17/06	8/17/06		
B	655	Barrel	28	8	175	6" round	Philip-7/3/06	Calvin	30		8/16/06	8/16/06		
B	656	Barrel	28	9	176	6" round	Philip-7/3/06	Calvin	30		8/16/06	8/16/06		
B	657	Barrel	13	9	202	6" round	Philip-7/3/06	Calvin	30		8/17/06	8/17/06		
B	658	Extension	E-4	10	217	6" round	Philip-7/17/06		20		7/19/06	7/19/06		
B	659	Extension	E-4	10	218	6" round	Philip-7/17/06		15		7/19/06	7/19/06		
B	660	Upper Dome	C	C-13	627	6" round	Philip-7/18/06		20		7/31/06	7/31/06	9/13/06	

QUAD	D&B NO.	TANK SECTION	ROW	Plate # or V DROP	Weston FLAW #	PATCH TYPE	WELDER & Date	Person in Basket	Time (Min)	COMMENTS	DATE OF		
											DYE CHEC	VAC BOX	COATING
B	661	Upper Dome	C	C-16	629	6" round	Philip-6/27/06	Todd	30		7/31/06	7/31/06	9/13/06
B	662	Upper Dome	B	B-12	652	6" round	Philip-7/18/06	Calvin	30		7/31/06	7/31/06	9/13/06
B	663	Barrel	1	7	151	6" see sketch	Philip-7/18/06	Calvin	25		8/23/06	8/23/06	
B	664	Extension	E-4	8	166	6" x 28" see sketch	Philip-7/6/06	Calvin	70		7/19/06	7/19/06	
B	665	Extension	E-1	8	517	6" x 8" see sketch	Philip-7/6/06	Calvin	45		7/19/06	7/19/06	9/13/06
B	666	Barrel	3	6	125	8" round	Philip-7/13/06		35		8/2/06	8/2/06	
B	667	Upper Dome	C	C-4	625	8" x 12"	Philip-7/18/06	Calvin	40		8/23/06	8/23/06	9/13/06
B	668	Extension	E-3	7	513	8" x 14" see sketch	Philip-7/20/06	Calvin	210		8/30/06	8/30/06	
B	669	Upper Dome	C	C-10	626	8" x 8" see sketch	Philip-7/18/06	Calvin	35		7/31/06	7/31/06	9/13/06
B	670	Extension	E-3	2	430	Coating Repair Only	x-Hugo	x	x				
C	671	Upper Dome	B	B-62	599	10" x 23" see sketch	Hugo-7/20/06	Reed	90		8/24/06	8/24/06	
C	672	Upper Dome	A	A-54	507	11" x 18.5" see sketch	Philip-7/11/06	Calvin	50		8/24/06	8/24/06	
C	673	Upper Dome	A	A-55	506	11" x 55" see sketch	Philip-7/11/06	Calvin	180		9/14/06	9/14/06	

QUAD	D&B NO.	TANK SECTION	ROW	Plate # or V DROP	Weston FLAW #	PATCH TYPE	WELDER & Date	Person in Basket	Time (Min)	COMMENTS	DATE OF			
											DYE CHEC	VAC BOX	COATING	
C	674	Upper Dome	A	A-61	487	12" x 14" see sketch	Hugo-7/18/06	Reed	70		8/24/06	8/24/06		
C	675	Extension	E-1	6	494	12" x 44" see sketch	Philip-7/17/06	Calvin	130		8/31/06	8/31/06		
C	676	Upper Dome	A	A-49	544	14" x 14" see sketch	Hugo-7/18/06	Reed	75		8/24/06	8/24/06		
C	677	Upper Dome	A	A-59	603	18" x 18"	Philip-7/10/06	Calvin	75		9/14/06	9/14/06		
C	678	Upper Dome	B	B-63	594	18" x 18" see sketch	Hugo-7/20/06	Reed	110		9/14/06	9/14/06		
C	679	Upper Dome	A	A-58	497	18.5" x 44" see sketch	Hugo-7/25/06	Reed	300		8/24/06	8/24/06		
C	680	Extension	E-1	1	473	19" x 30" see sketch	Philip-7/17/06	Calvin	105		9/14/06	9/14/06		
C	681	Extension	E-1	10	542	19" x 59" see sketch	Hugo-7/19/06	Reed	150		8/31/06	8/31/06		
C	682	Extension	E-1	2	481	19.5" x 40" see sketch	Hugo-7/19/06	Reed	185		9/14/06	9/14/06		
C	683	Upper Dome	A	A-59	602	20" x 16" see sketch	Philip-7/10/06	Calvin	75		8/24/06	8/24/06		
C	684	Upper Dome	B	B-63	596	22" x 32" see sketch	Hugo-7/24/06	Reed	125		8/24/06	8/24/06		
C	685	Upper Dome	B	B-62	600	23" x 25" see sketch	Hugo-7/25/06	Reed	180		8/24/06	8/24/06		
C	686	Upper Dome	B	B-62	598	23" x 28" see sketch	Hugo-7/24/06	Reed	185		8/24/06	8/24/06		
C		Barrel	28	8	191	6" round	Hugo-8/23/06	Reed	175		9/15/06	9/15/06		

QUAD	D&B NO.	TANK SECTION	ROW	Plate # or V DROP	Weston FLAW #	PATCH TYPE	WELDER & Date	Person in Basket	Time (Min)	COMMENTS	DATE OF		
											DYE CHEC	VAC BOX	COATING
C	687	Upper Dome	A	A-53	508	24" x 31.5" see sketch	Philip-7/19-20/2006	Reed	190		9/14/06	9/14/06	
C	688	Barrel	11	7	184	30" x 48" see sketch	Hugo-7/26/06	Todd	300	Reed 7/31/06	9/15/06	9/15/06	
C	689	Lower Dome	LD-1	23 & 24	13	4" x 6"	x-Hugo	x			10/9/06	10/9/06	
C	690	Lower Dome	LD-1	26 & 27	16	4" x 6"	x-Hugo	x			10/9/06	10/9/06	
C	691	Lower Dome	LD-1	28 & 29	18	4" x 6"	x-Hugo	x			10/9/06	10/9/06	
C	692	Lower Dome	LD-1	29 & 30	19	4" x 6"	x-Hugo	x			10/9/06	10/9/06	
C	693	Lower Dome	LD-1	30 & 31	20	4" x 6"	x-Hugo	x			10/9/06	10/9/06	
C	694	Lower Dome	LD-1	31 & 32	21	4" x 6"	x-Hugo	x			10/9/06	10/9/06	
C	695	Lower Dome	LD-1	25 & 26	15	4" x 6"	x-Hugo	x			10/9/06	10/9/06	
C	696	Lower Dome	LD-1	27 & 28	17	4" x 6"	x-Hugo	x			10/9/06	10/9/06	
C	697	Upper Dome	A	A-59	496	44" x 55.5" see sketch	Hugo-8/2/06	Reed	345		9/14/06	9/14/06	
C	698	Extension	E-3	1	478	6" see sketch	Hugo-8/1/06	Reed	55		9/5/06	9/5/06	
C	699	Upper Dome	A	A-67	482	6"see sketch	Hugo-8/1/06	Reed	75		8/24/06	8/24/06	

QUAD	D&B NO.	TANK SECTION	ROW	Plate # or V DROP	Weston FLAW #	PATCH TYPE	WELDER & Date	Person in Basket	Time (Min)	COMMENTS	DATE OF		
											DYE CHEC	VAC BOX	COATING
C	700	Barrel	5	1	64	6" round	Hugo-7/26/06	Todd	45		9/5/06	9/5/06	
C	701	Barrel	12	2	89	6" round	Hugo-7/31/06	Reed	45		8/31/06	8/31/06	
C	702	Barrel	21	6	147	6" round	Hugo-7/31/06	Reed	40		9/14/06	9/14/06	
C	703	Barrel	25	6	149	6" round	Hugo-7/31/06	Reed	45		9/6/06	9/6/06	
C	704	Barrel	26	9	192	6" round	Hugo-8/3/06	Reed	210		9/15/06	9/15/06	
C	705	Extension	E-2	1	474	6" round	Hugo-7/26/06	Todd	27		8/31/06	8/31/06	
C	706	Extension	E-1	5	488	6" round	Hugo-7/3/06	Todd	35		8/31/06	8/31/06	
C	707	Extension	E-1	7	500	6" round	Hugo-7/3/06	Todd	35	Dan look at leak below, right of 6" round	7/7/06	7/7/06	
C	708	Upper Dome	B	B-70	591	6" round	Hugo-8/1/06	Reed	40		8/24/06	8/24/06	
C	709	Extension	E-4	5	145	6" x 8" see sketch	Hugo-7/24/06	Reed	175		9/5/06	9/5/06	
C	710	Extension	E-3	6	490	8" round	Hugo-7/5/06	Todd	45		7/7/06	7/7/06	
C	711	Upper Dome	A	A-60	495	8" round	Philip-7/11/06	Calvin	25		8/24/06	8/24/06	
C	712	Extension	E-4	10	246	8" x 10" see sketch	Hugo-7/25-26/06	Reed	80		9/14/06	9/14/06	

QUAD	D&B NO.	TANK SECTION	ROW	Plate # or V DROP	Weston FLAW #	PATCH TYPE	WELDER & Date	Person in Basket	Time (Min)	COMMENTS	DATE OF		
											DYE CHEC	VAC BOX	COATING
C	713	Upper Dome	A	A-67	637	8" x 10" see sketch	Hugo-8/1/06	Reed	100		8/24/06	8/24/06	
D	714	Upper Dome	A	A-32	571	10" x 55.5" see sketch	Philip-7/11/06	Calvin	200		8/24/06	8/24/06	
D	715	Upper Dome	B	B-41	611	12" x 12"	Philip-7/11/06	Calvin	45		8/24/06	8/24/06	
D	716	Barrel	8	18	468	12" x 18" see sketch	Hugo-7/31/06	Reed	275		9/7/06	9/7/06	
D	717	Upper Dome	B	B-52	606	12" x 18" see sketch	Hugo-7/18/06	Reed	120		8/24/06	8/24/06	
D	718	Extension	E-4	11	259	14 x 102" see sketch	Hugo-8/3&8/06	Reed	585	Cal in basket 8/8	9/14/06	9/14/06	
D	719	Upper Dome	A	A-46	680	14" x 16" see sketch	Hugo-8/3/06	Reed	60		9/14/06	9/14/06	
D	720	Extension	E-2	12	552	24" x 28" see sketch	Hugo 7/20	Reed	150		8/31/06	8/31/06	
D	721	Lower Dome	LD-1	34 & 35	23	4" x 6"	x-Hugo	x		732?	10/9/06	10/9/06	
D	722	Lower Dome	LD-1	35 & 36	24	4" x 6"	x-Hugo	x			10/9/06	10/9/06	
D	723	Lower Dome	LD-1	36 & 37	25	4" x 6"	x-Hugo	x			10/9/06	10/9/06	
D	724	Lower Dome	LD-1	38 & 39	27	4" x 6"	x-Hugo	x			10/9/06	10/9/06	
D	725	Lower Dome	LD-1	43 & 44	31	4" x 6"	x-Hugo	x			10/9/06	10/9/06	

QUAD	D&B NO.	TANK SECTION	ROW	Plate # or V DROP	Weston FLAW #	PATCH TYPE	WELDER & Date	Person in Basket	Time (Min)	COMMENTS	DATE OF		
											DYE CHEC	VAC BOX	COATING
D	726	Barrel	1	18	456	6" round	Hugo-8/3/06	Reed	35		8/30/06	8/30/06	
D	727	Extension	E-3	14	563	6" round	Hugo-6/29/06	Reed	20		7/7/06	7/7/06	
D	728	Extension	E-1	16	569	6" round	Hugo-6/29/06	Reed	25		7/7/06	7/7/06	
D	729	Upper Dome	B	B-51	607	6" round	Philip-7/10/06	Calvin	30		8/24/06	8/24/06	
D	730	Upper Dome	D	D-36	642	6" round	Hugo -8/3/06	Reed	40		8/24/06	8/24/06	
D	731	Extension	E-1	18	586	6" see sketch	Hugo-7/24/06	Reed	30		8/24/06	8/24/06	
D	732	Barrel	11	16	400	6" x 10" see sketch	Hugo-8/1/06	Reed	90		10/11/06	10/11/06	
D	733	Extension	E-4	16	389	6" x 12" see sketch	Hugo-7/18/06	Reed	50		9/14/06	9/14/06	
D	734	Extension	E-4	18	455	6" x 6" see sketch	Hugo-8/3/06	Reed	40		8/31/06	8/31/06	
D	735	Lower Dome	LD-1	42 & 43	676	6" x 6" see sketch							
D	736	Extension	E-1	18	585	8" x 12" see sketch	Hugo-7/24/06	Reed	55		8/24/06	8/24/06	
D	same as 736	Extension	E-1	18	587	Repair with flaw No. 585							
D	737	Extension	E-4	17	443	8" x 8" see sketch	Hugo 7/18/06	Reed	50		8/31/06	8/31/06	

QUAD	D&B NO.	TANK SECTION	ROW	Plate # or V DROP	Weston FLAW #	PATCH TYPE	WELDER & Date	Person in Basket	Time (Min)	COMMENTS	DATE OF			
											DYE CHEC	VAC BOX	COATING	
D	738	Upper Dome	A	A-44	638	8" x 8" see sketch	Philip-7/10/06	Calvin	75	Tombstone	8/24/06	8/24/06		
D	739	Upper Dome	B	B-42	610	9" x 14" see sketch	Hugo-8/3/06	Reed	120		9/14/06	9/14/06		



QUAD	D&B NO.	TANK SECTION	ROW	Plate # or V DROP	Weston FLAW #	PATCH TYPE/ Weld Repair	WELDER & Date	Person in Basket	TIME	COMMENTS	DATE OF		
											DYE CHEC	VAC BOX	COATING
A	300	Lower Dome	LD-1	4 & 5	37	Weld Repair							
A	301	Barrel	2 & 3	Under catwalk	46	Weld Repair	Philip-8-29-06	Taylor	30	Done with 302	8/31/06	8/31/06	
A	302	Barrel	2 & 3	Under catwalk	47	Weld Repair	Philip-8-29-06	Taylor	30		8/31/06	8/31/06	
A	303	Barrel	1	Under catwalk	48	Weld Repair	Philip-8-29-06	Taylor	30		9/5/06	9/5/06	
A	304	Barrel	2	Under catwalk	50	Weld Repair	Philip-8-29-06	Taylor	20		8/31/06	8/31/06	
A	305	Extension	E-4	12	229	Weld Repair	Philip-8-15-06	Calvin	25		8/17/06	8/17/06	
A	306	Barrel	3 & 4	12	231	Weld Repair	Philip-8-3-06	Todd	35		8/17/06	8/17/06	
A	307	Barrel	3 & 4	12	232	Weld Repair	Philip-8-3-06	Todd	25		8/17/06	8/17/06	
A	308	Barrel	5 & 6	12	233	Weld Repair	Philip-8-15-06	Calvin	25		8/17/06	8/17/06	
A	309	Barrel	5 & 6	12	234	Weld Repair	Philip-8-3-06	Todd	20		8/17/06	8/17/06	
A	310	Barrel	7	12	235	Weld Repair	Philip-8-3-06	Todd	20		8/17/06	8/17/06	
A	311	Barrel	16	12	237	Weld Repair	Hugo-8-24-06	Reed	35		8/30/06	8/30/06	
A	312	Barrel	16	13	315	Weld Repair	Hugo-8-24-06	Reed	20		8/30/06	8/30/06	

QUAD	D&B NO.	TANK SECTION	ROW	Plate # or V DROP	Weston FLAW #	PATCH TYPE/ Weld Repair	WELDER & Date	Person in Basket	TIME	COMMENTS	DATE OF		
											DYE CHEC	VAC BOX	COATING
A	313	Barrel	16	13	316	Weld Repair	Hugo- 8-24-06	Reed	20		8/30/06	8/30/06	
A	314	Barrel	13	13	317	Weld Repair	Hugo- 8-24-06	Reed	25		8/30/06	8/30/06	
A	315	Barrel	11 & 12	13	318	Weld Repair	Hugo- 8-24-06	Reed	25		8/30/06	8/30/06	
A	316	Barrel	1	13	319	Weld Repair	Philip- 8-15-06	Calvin	30		8/17/06	8/17/06	
A	317	Barrel	5 & 6	13	320	Weld Repair	Philip- 8-15-06	Calvin	25		8/17/06	8/17/06	
A	318	Barrel	15	14	322	Weld Repair	Hugo- 8-24-06	Reed	20		8/30/06	8/30/06	
A	319	Barrel	15	14	323	Weld Repair	Hugo- 8-24-06	Reed	15		8/30/06	8/30/06	
A	320	Barrel	6	14	324	Weld Repair	Philip- 8-15-06	Calvin	25		8/30/06	8/30/06	
A	321	Barrel	6	14	325	Weld Repair	Hugo- 8-24-06	Reed	20		8/30/06	8/30/06	
A	322	Barrel	3 & 4	14	350	Weld Repair	Philip- 8-28-06	Taylor	15		8/30/06	8/30/06	
A	323	Barrel	2	14	351	Weld Repair	Philip- 8-28-06	Taylor	15		8/30/06	8/30/06	
A	324	Barrel	1	15	354	Weld Repair	Philip- 8-28-06	Taylor	20		8/30/06	8/30/06	
A	325	Barrel	6	15	356	Weld Repair	Hugo- 8-24-06	Reed	20		8/30/06	8/30/06	

QUAD	D&B NO.	TANK SECTION	ROW	Plate # or V DROP	Weston FLAW #	PATCH TYPE/ Weld Repair	WELDER & Date	Person in Basket	TIME	COMMENTS	DATE OF		
											DYE CHEC	VAC BOX	COATING
A	326	Barrel	12 & 13	15	357	Weld Repair	Philip-8-28-06	Taylor	15		8/30/06	8/30/06	
A	327	Barrel	24	15	360	Weld Repair	Philip-8-28-06	Taylor	20		8/30/06	8/30/06	
A	328	Barrel	13	16	361	Weld Repair	Philip-8-28-06	Taylor	20		8/30/06	8/30/06	
A	329	Barrel	10	16	362	Weld Repair	Philip-8-28-06	Taylor	20		8/30/06	8/30/06	
A	330	Barrel	4	16	363	Weld Repair	Philip-8-28-06	Taylor	15		8/30/06	8/30/06	
A	331	Barrel	8 & 9	17	369	Weld Repair	Philip-8-28-06	Taylor	15		8/30/06	8/30/06	
A	332	Barrel	9 & 10	18	370	Weld Repair	Philip-8-28-06	Taylor	20		8/30/06	8/30/06	
A	333	Barrel	5	18	372	Weld Repair	Philip-8-28-06	Taylor	20		8/30/06	8/30/06	
A/B	334	Barrel	3	11	221	Weld Repair	Philip-8-3-06	Todd	20		8/23/06	8/23/06	
A/B	335	Barrel	3	11	222	Weld Repair	Philip-8-3-06	Todd	30		8/17/06	8/17/06	
A/B	336	Barrel	6	11	224	Weld Repair	Philip-8-15-06	Calvin	30		8/23/06	8/23/06	
B	337	Lower Dome	LD-1	18 & 19	9	Weld Repair					10/9/06	10/9/06	
B	338	Barrel	1	1	55	Weld Repair	Philip-7/25/06	Todd	65	Part A, B & C	8/17/06	8/17/06	

QUAD	D&B NO.	TANK SECTION	ROW	Plate # or V DROP	Weston FLAW #	PATCH TYPE/ Weld Repair	WELDER & Date	Person in Basket	TIME	COMMENTS	DATE OF		
											DYE CHEC	VAC BOX	COATING
B	339	Barrel	7	1	56	Weld Repair	Philip-7/25/06	Todd	25		8/2/06	8/2/06	
B	340	Barrel	10	1	57	Weld Repair	Philip-7/25/06	Todd	30		8/2/06	8/2/06	
B	341	Barrel	21	1	67	Weld Repair	Philip-7/24/06	Calvin	34		8/16/06	8/16/06	
B	342	Barrel	23	1	68	Weld Repair	Philip-7/24/06	Calvin	40		8/23/06	8/23/06	
B	343	Barrel	24	2	69	Weld Repair	Philip-7/24/06	Calvin	22		8/23/06	8/23/06	
B	344	Barrel	24	2	70	Weld Repair	Philip-7/24/06	Calvin	25		8/2/06	8/2/06	
B	345	Barrel	21	2	71	Weld Repair	Philip-7/24/06	Calvin	27		8/16/06	8/16/06	
B	346	Barrel	12	2	72	Weld Repair	Philip-7/25/06	Todd	25		8/23/06	8/23/06	
B	347	Barrel	7	2	73	Weld Repair	Philip-7/25/06	Todd	35		8/2/06	8/2/06	
B	348	Barrel	6	2	74	Weld Repair	Philip-7/25/06	Todd	45	Part A, B (passed 8/2) & C	8/23/06	8/23/06	
B	349	Barrel	4	2	75	Weld Repair	Philip-7/25/06	Todd	30		8/2/06	8/2/06	
B	350	Extension	E-4	3	76	Weld Repair	Philip-7/24/06	Calvin	20		8/23/06	8/23/06	
B	351	Barrel	3	3	78	Weld Repair	Philip-7/24/06	Calvin	25		8/2/06	8/2/06	

QUAD	D&B NO.	TANK SECTION	ROW	Plate # or V DROP	Weston FLAW #	PATCH TYPE/ Weld Repair	WELDER & Date	Person in Basket	TIME	COMMENTS	DATE OF		
											DYE CHEC	VAC BOX	COATING
B	352	Barrel	3	3	79	Weld Repair	Philip-7/24/06	Calvin	25		8/2/06	8/2/06	
B	353	Barrel	5	3	80	Weld Repair	Philip-7/24/06	Calvin	20		8/2/06	8/2/06	
B	354	Barrel	7	3	81	Weld Repair	Philip-7/24/06	Calvin	25		8/2/06	8/2/06	
B	355	Barrel	12	3	82	Weld Repair	Philip-7/24/06	Calvin	20		8/2/06	8/2/06	
B	356	Barrel	16	3	83	Weld Repair	Philip-7/24/06	Calvin	32		8/17/06	8/17/06	
B	357	Barrel	22	3	84	Weld Repair	Philip-7/24/06	Calvin	25		8/16/06	8/16/06	
B	358	Barrel	27	3	85	Weld Repair	Philip-7/24/06	Calvin	9	Not a weld-Filled in	8/16/06	8/16/06	
B	359	Barrel	7	3	105	Weld Repair	Philip-7/24/06	Calvin	22		8/2/06	8/2/06	
B	360	Barrel	7	4	106	Weld Repair	Philip-7/25/06	Todd	28		8/2/06	8/2/06	
B	361	Barrel	5	4	107	Weld Repair	Philip-7/25/06	Todd	25		8/23/06	8/23/06	
B	362	Barrel	2	4	108	Weld Repair	Philip-7/25/06	Todd	20		8/17/06	8/17/06	
B	363	Barrel	2	5	113	Weld Repair	Philip-7/25/06	Todd	20		8/17/06	8/17/06	
B	364	Barrel	5	5	114	Weld Repair	Philip-7/25/06	Todd	18		8/23/06	8/23/06	

QUAD	D&B NO.	TANK SECTION	ROW	Plate # or V DROP	Weston FLAW #	PATCH TYPE/ Weld Repair	WELDER & Date	Person in Basket	TIME	COMMENTS	DATE OF		
											DYE CHEC	VAC BOX	COATING
B	365	Barrel	8	5	115	Weld Repair	Philip-7/25/06	Todd	10		8/23/06	8/23/06	
B	366	Barrel	19	5	117	Weld Repair	Philip-7/26/06	Calvin	25		8/17/06	8/17/06	
B	367	Barrel	28	5	119	Weld Repair	Philip-7/26/06	Calvin	25		8/16/06	8/16/06	
B	368	Barrel	3	6	126	Weld Repair	Philip-7/26/06	Calvin	25		8/2/06	8/2/06	
B	369	Barrel	3	6	127	Weld Repair	Philip-7/26/06	Calvin	25	369 & 370 Patched together	8/2/06	8/2/06	
B	370	Barrel	3	6	128	Weld Repair	Philip-7/26/06	Calvin	25		8/2/06	8/2/06	
B	371	Barrel	3	6	129	Weld Repair	Philip-7/26/06	Calvin	30		8/2/06	8/2/06	
B	372	Barrel	5	6	131	Weld Repair	Philip-7/26/06	Calvin	25		8/2/06	8/2/06	
B	373	Barrel	6	6	132	Weld Repair	Philip-7/25/06	Todd	17		8/23/06	8/23/06	
B	374	Barrel	6	6	133	Weld Repair	Philip-7/25/06	Todd	12		8/2/06	8/2/06	
B	375	Barrel	8	6	134	Weld Repair	Philip-7/25/06	Todd	30		8/2/06	8/2/06	
B	376	Barrel	26	6	136	Weld Repair	Philip-7/26/06	Calvin	30		8/16/06	8/16/06	
B	377	Barrel	28	6	137	Weld Repair	Philip-7/26/06	Calvin	35		8/16/06	8/16/06	

QUAD	D&B NO.	TANK SECTION	ROW	Plate # or V DROP	Weston FLAW #	PATCH TYPE/ Weld Repair	WELDER & Date	Person in Basket	Time (Min)	COMMENTS	DATE OF		
											DYE CHEC	VAC BOX	COATING
B	378	Barrel	28	6	138	Weld Repair	Philip-7/26/06	Calvin	25		8/16/06	8/16/06	
B	379	Barrel	28	6	139	Weld Repair	Philip-7/26/06	Calvin	35		8/16/06	8/16/06	
B	380	Barrel	4	7	153	Weld Repair	Philip-7/26/06	Calvin	30		8/30/06	8/30/06	
B	381	Barrel	6	7	155	Weld Repair	Philip-7/26/06	Calvin	25		8/2/06	8/2/06	
B	382	Barrel	6	7	156	Weld Repair	Philip-7/26/06	Calvin	22		8/2/06	8/2/06	
B	383	Barrel	9	7	158	Weld Repair	Philip-8/1/06	Calvin	30		8/2/06	8/2/06	
B	384	Barrel	10	7	159	Weld Repair	Philip-8/1/06	Calvin	30		8/2/06	8/2/06	
B	385	Barrel	10	7	160	Weld Repair	Philip-8/1/06	Calvin	25		8/23/06	8/23/06	
B	386	Barrel	12	7	162	Weld Repair	Philip-8/1/06	Calvin	30		8/17/06	8/17/06	
B	387	Barrel	12	7	163	Weld Repair	Philip-8/1/06	Calvin	35		8/17/06	8/17/06	
B	388	Barrel	16	7	165	Weld Repair	Philip-8/1/06	Calvin	25		<b>8/17/06</b>	<b>8/17/06</b>	
B	389	Barrel	2	8	168	Weld Repair	Philip-8/1/06	Calvin	30		8/17/06	8/17/06	
B	390	Barrel	3	8	169	Weld Repair	Philip-8/1/06	Calvin	25		8/2/06	8/2/06	

QUAD	D&B NO.	TANK SECTION	ROW	Plate # or V DROP	Weston FLAW #	PATCH TYPE/ Weld Repair	WELDER & Date	Person in Basket	TIME	COMMENTS	DATE OF		
											DYE CHEC	VAC BOX	COATING
B	391	Barrel	3	8	170	Weld Repair	Philip-8/1/06	Calvin	20		8/2/06	8/2/06	
B	392	Barrel	5	8	171	Weld Repair	Philip-8/1/06	Calvin	25		8/2/06	8/2/06	
B	393	Barrel	11	8	172	Weld Repair	Philip-8/3/06	Todd	30		8/17/06	8/17/06	
B	394	Barrel	27	8	174	Weld Repair	Philip-8/3/06	Todd	35		8/17/06	8/17/06	
B	395	Barrel	3	9	195	Weld Repair	Philip-8/3/06	Todd	35		8/17/06	8/17/06	
B	396	Barrel	4	9	196	Weld Repair	Philip-8/3/06	Todd	30		8/17/06	8/17/06	
B	397	Barrel	4	9	197	Weld Repair	Philip-8/3/06	Todd	25		8/17/06	8/17/06	
B	398	Barrel	7 & 8	9	198	Weld Repair	Philip-8/3/06	Todd	25		8/17/06	8/17/06	
B	399	Barrel	20	9	205	Weld Repair	Philip-8/3/06	Todd	35		8/23/06	8/23/06	
B	400	Barrel	22	9	206	Weld Repair	Philip-8/3/06	Todd	20		8/17/06	8/17/06	
B	401	Barrel	26 & 27	10	207	Weld Repair	Philip-8/15/06	Calvin	30		8/16/06	8/16/06	
B	402	Barrel	18	10	209	Weld Repair	Philip-8/15/06	Calvin	30		8/23/06	8/23/06	
B	403	Barrel	4	10	214	Weld Repair	Philip-8/3/06	Todd	35		8/17/06	8/17/06	



QUAD	D&B NO.	TANK SECTION	ROW	Plate # or V DROP	Weston FLAW #	PATCH TYPE/ Weld Repair	WELDER & Date	Person in Basket	TIME	COMMENTS	DATE OF		
											DYE CHEC	VAC BOX	COATING
B	404	Extension	E-3	3	435	Weld Repair	Philip-7/24/06	Calvin	47		8/23/06	8/23/06	
B	405	Barrel	1	7	682	Weld Repair	Philip-8/1/06	Calvin	25		8/23/06	8/23/06	
B	406	Barrel	1	7	683	Weld Repair	Philip-8/1/06	Calvin	25		8/17/06	8/17/06	
C	407	Lower Dome	LD-1	24 & 25	14	Weld Repair					10/9/06	10/9/06	
C	408	Barrel	1	1	65	Weld Repair	Hugo-9-06	8- Calvin	30		9/5/06	9/5/06	
C	409	Barrel	26	3	86	Weld Repair	Hugo-9-06	8- Calvin	30		9/6/06	9/6/06	
C	410	Barrel	24	2	87	Weld Repair	Hugo-9-06	8- Calvin	30		9/7/06	9/7/06	
C	411	Barrel	22	3	88	Weld Repair	Hugo-9-06	8- Calvin	35		9/7/06	9/7/06	
C	412	Barrel	18 & 19	2	90	Weld Repair	Hugo-9-06	8- Calvin	30		9/7/06	9/7/06	
C	413	Barrel	13 & 14	3	91	Weld Repair	Hugo-9-06	8- Calvin	20		9/15/06	9/7/06	
C	414	Barrel	13	3	92	Weld Repair	Hugo-9-06	8- Calvin	20		9/7/06	9/7/06	
C	415	Barrel	11 & 12	3	93	Weld Repair	Hugo-9-06	8- Calvin	20		9/7/06	9/7/06	
C	416	Barrel	1 & 2	3	96	Weld Repair	Hugo-9-06	8- Calvin	35		9/5/06	9/5/06	
C	417	Barrel	2 & 3	4	99	Weld Repair	Hugo-9-06	8- Calvin	20		9/5/06	9/5/06	
C	418	Barrel	4 & 5	4	100	Weld Repair	Hugo-9-06	8- Calvin	30		9/5/06	9/5/06	

QUAD	D&B NO.	TANK SECTION	ROW	Plate # or V DROP	Weston FLAW #	PATCH TYPE/ Weld Repair	WELDER & Date	Person in Basket	TIME	COMMENTS	DATE OF		
											DYE CHEC	VAC BOX	COATING
C	419	Barrel	27 & 28	5	142	Weld Repair	Hugo-8/17/06	Reed	25		9/6/06	9/6/06	
C	420	Barrel	18 & 19	5	143	Weld Repair	Hugo-9/8/06	Todd	35		9/14/06	9/14/06	
C	421	Barrel	17 & 18	5	144	Weld Repair	Hugo-9/8/06	Todd	50		9/14/06	9/14/06	
C	422	Barrel	23 & 24	6	148	Weld Repair	Hugo-9/12/06	Reed	30		9/14/06	9/14/06	
C	423	Barrel	3	7	177	Weld Repair	Hugo-9/8/06	Todd	45	same time as 424	9/14/06	9/14/06	
C	424	Barrel	3	7	178	Weld Repair	Hugo-9/8/06	Todd	45		9/14/06	9/14/06	
C	425	Barrel	4	7	179	Weld Repair	Hugo-9/8/06	Todd	55	same time as 426	9/14/06	9/14/06	
C	426	Barrel	4	7	180	Weld Repair	Hugo-9/8/06	Todd	55		9/14/06	9/14/06	
C	427	Barrel	6	7	181	Weld Repair	Hugo-9/8/06	Todd	40	A & B	9/14/06	9/14/06	
C	428	Barrel	6	7	182	Weld Repair	Hugo-9/8/06	Todd	45	same time as 431	9/14/06	9/14/06	
C	429	Barrel	3	8	185	Weld Repair	Hugo-9/8/06	Todd	20		9/14/06	9/14/06	
C	430	Barrel	3	8	186	Weld Repair	Hugo-9/8/06	Todd	20		10/11/06	10/11/06	
C	431	Barrel	6	8	187	Weld Repair	Hugo-9/8/06	Todd	45		9/14/06	9/14/06	

QUAD	D&B NO.	TANK SECTION	ROW	Plate # or V DROP	Weston FLAW #	PATCH TYPE/ Weld Repair	WELDER & Date	Person in Basket	TIME	COMMENTS	DATE OF		
											DYE CHEC	VAC BOX	COATING
C	432	Barrel	10	8	188	Weld Repair	Hugo-8/28/06	Reed	25		9/7/06	9/7/06	
C	433	Barrel	10	8	189	Weld Repair	Hugo-8/28/06	Reed	25		9/7/06	9/7/06	
C	434	Barrel	1	9	238	Weld Repair	Hugo-8/29/06	Reed	30		8/31/06	8/31/06	
C	435	Barrel	1	9	239	Weld Repair	Hugo-8/29/06	Reed	30		9/15/06	8/31/06	
C	436	Barrel	1	9	240	Weld Repair	Hugo-8/29/06	Reed	25		8/31/06	8/31/06	
C	437	Barrel	1	9	241	Weld Repair	Hugo-9/12/06	Reed	25		9/14/06	9/14/06	
C	438	Barrel	1	9	242	Weld Repair	Hugo-8/29/06	Reed	25		8/31/06	8/31/06	
C	439	Barrel	2	9	243	Weld Repair	Hugo-8/29/06	Reed	30		9/5/06	9/5/06	
C	440	Barrel	4	9	244	Weld Repair	Hugo-9/6/06	Reed	30		9/7/06	9/7/06	
C	441	Barrel	4	9	245	Weld Repair	Hugo-9/6/06	Reed	30		9/7/06	9/7/06	
C	442	Barrel	3	9	247	Weld Repair	Hugo-8/29/06	Reed	30		9/5/06	9/5/06	
C	443	Barrel	3	10	251	Weld Repair	Hugo-8/29/06	Reed	30		9/5/06	9/5/06	
C	444	Barrel	3	10	252	Weld Repair	Hugo-8/29/06	Reed	30		9/5/06	9/5/06	

QUAD	D&B NO.	TANK SECTION	ROW	Plate # or V DROP	Weston FLAW #	PATCH TYPE/ Weld Repair	WELDER & Date	Person in Basket	TIME	COMMENTS	DATE OF		
											DYE CHEC	VAC BOX	COATING
C	445	Barrel	3	10	253	Weld Repair	Hugo-8/29/06	Reed			9/5/06	9/5/06	
C	446 A&B	Barrel	4 & 5	10	254	Weld Repair	Hugo-9/6/06	Reed			9/6/06	9/6/06	
C	447	Barrel	9	10	255	Weld Repair	Hugo-8/28/06	Reed			9/7/06	9/7/06	
C	448	Barrel	14	10	256	Weld Repair	Hugo-9/12/06	Reed			9/14/06	9/14/06	
C	449	Barrel	14	10	257	Weld Repair	Hugo-9/12/06	Reed			9/14/06	9/14/06	
C	450	Barrel	16	10	258	Weld Repair	Hugo-9/8/06	Todd			9/14/06	9/14/06	
C	451	Upper Dome	A	A-48	545	Weld Repair	Hugo-8/23/06	Reed			8/24/06	8/24/06	
C	452	Upper Dome	A	A-48	546	Weld Repair	Hugo-8/23/06	Reed			9/14/06	9/14/06	
C	453	Barrel	28	8	684	Weld Repair	Hugo-8/14/06	Reed		See Dan	9/15/06	9/15/06	
D	454	Lower Dome	LD-1	40 & 41	29	Weld Repair							
D	455	Lower Dome	LD-1	42 & 43	30	Weld Repair					10/9/06	10/9/06	
D	456	Barrel	20	Underca t	51	Weld Repair	Philip-8/29/06	Taylor			9/5/06	9/5/06	
D	457	Barrel	13 & 14	Underca t	58	Weld Repair	Hugo-8/29/06	Reed			9/6/06	9/6/06	

QUAD	D&B NO.	TANK SECTION	ROW	Plate # or V DROP	Weston FLAW #	PATCH TYPE/ Weld Repair	WELDER & Date	Person in Basket	TIME	COMMENTS	DATE OF		
											DYE CHEC	VAC BOX	COATING
D	458	Barrel	3	11	260	Weld Repair	Hugo-8/22/06	Reed	25		9/5/06	9/5/06	
D	459	Barrel	3	11	261	Weld Repair	Hugo-9/6/06	Reed	30		9/6/06	9/6/06	
D	460	Barrel	4	11	262	Weld Repair	Hugo-8/23/06	Reed	25		9/6/06	9/6/06	
D	461	Barrel	5	11	263	Weld Repair	Hugo-8/23/06	Reed	20		9/6/06	9/6/06	
D	462	Barrel	6	11	264	Weld Repair	Hugo-8/28/06	Reed	25		9/6/06	9/6/06	
D	463	Barrel	6	11	265	Weld Repair	Hugo-8/28/06	Reed	30		9/6/06	9/6/06	
D	464	Barrel	8	11	266	Weld Repair	Hugo-8/28/06	Reed	20		9/15/06	9/15/06	
D	465	Barrel	9	11	267	Weld Repair	Hugo-8/28/06	Reed	20		9/7/06	9/7/06	
D	466	Barrel	11	11	268	Weld Repair	Hugo-9/12/06	Reed	25		9/14/06	9/14/06	
D	467	Barrel	13	11	269	Weld Repair	Hugo-9/8/06	Todd	25		9/14/06	9/14/06	
D	468	Barrel	13	11	270	Weld Repair	Hugo-9/12/06	Reed	30		9/14/06	9/14/06	
D	469	Barrel	19	12	273	Weld Repair	Hugo-8/22/06	Reed	30		9/15/06	9/15/06	
D	470	Barrel	14	11	274	Weld Repair	Hugo-9/12/06	Reed	30		9/14/06	9/14/06	

QUAD	D&B NO.	TANK SECTION	ROW	Plate # or V DROP	Weston FLAW #	PATCH TYPE/ Weld Repair	WELDER & Date	Person in Basket	TIME	COMMENTS	DATE OF		
											DYE CHEC	VAC BOX	COATING
D	471	Barrel	17	11	275	Weld Repair	Hugo-9/8/06	Todd	25		9/14/06	9/14/06	
D	472	Barrel	20	11	276	Weld Repair	Hugo-9/8/06	Todd	20		9/14/06	9/14/06	
D	473	Barrel	20	11	277	Weld Repair	Hugo-8/22/06	Reed	30		9/7/06	9/7/06	
D	474	Barrel	24	11	278	Weld Repair	Hugo-8/22/06	Reed	30		9/5/06	9/5/06	
D	475	Barrel	24 & 25	11	279	Weld Repair	Hugo-8/14/06	Reed	25		9/5/06	9/5/06	
D	476	Barrel	28	11	282	Weld Repair	Hugo-8/14/06	Reed	30		9/5/06	9/5/06	
D	477	Barrel	28	12	284	Weld Repair	Hugo-8/14/06	Reed	30		9/5/06	9/5/06	
D	478	Barrel	28	12	285	Weld Repair	Hugo-8/14/06	Reed	40		9/5/06	9/5/06	
D	479	Barrel	28	12	286	Weld Repair	Hugo-8/14/06	Reed	25		9/5/06	9/5/06	
D	480	Barrel	28	12	287	Weld Repair	Hugo-8/14/06	Reed	25		9/5/06	9/5/06	
D	481	Barrel	21	12	290	Weld Repair	Hugo-8/29/06	Reed	40	Done with 482	9/7/06	9/7/06	
D	482	Barrel	21	12	291	Weld Repair	Hugo-8/29/06	Reed	40		9/7/06	9/7/06	
D	483	Barrel	7	12	292	Weld Repair	Hugo-8/28/06	Reed	25		9/15/06	9/6/06	

QUAD	D&B NO.	TANK SECTION	ROW	Plate # or V DROP	Weston FLAW #	PATCH TYPE/ Weld Repair	WELDER & Date	Person in Basket	TIME	COMMENTS	DATE OF		
											DYE CHEC	VAC BOX	COATING
D	484	Barrel	7	12	293	Weld Repair	Hugo-8/28/06	Reed	30		9/6/06	9/6/06	
D	485	Barrel	7	12	294	Weld Repair	Hugo-8/28/06	Reed	30		9/6/06	9/6/06	
D	486	Barrel	5	12	295	Weld Repair	Hugo-8/28/06	Reed	30		9/6/06	9/6/06	
D	487	Barrel	5	12	296	Weld Repair	Hugo-8/23/06	Reed	20		9/14/06	9/14/06	
D	488	Barrel	14	12	297	Weld Repair	Hugo-9/12/06	Reed	25		9/14/06	9/14/06	
D	489	Barrel	1	12	298	Weld Repair	Hugo-8/22/06	Reed	20		8/31/06	8/31/06	
D	490	Barrel	1	12	299	Weld Repair	Hugo-8/22/06	Reed	20		8/31/06	8/31/06	
D	491	Barrel	2	12	301	Weld Repair	Hugo-8/22/06	Reed	25		9/5/06	9/5/06	
D	492	Barrel	2	12	302	Weld Repair	Hugo-8/22/06	Reed	25		9/14/06	9/14/06	
D	493	Barrel	3	12	303	Weld Repair	Hugo-8/22/06	Reed	30		9/5/06	9/5/06	
D	494	Barrel	1	13	305	Weld Repair	Hugo-8/22/06	Reed	25		8/31/06	8/31/06	
D	495	Barrel	1	13	306	Weld Repair	Hugo-8/22/06	Reed	15		8/31/06	8/31/06	
D	496	Barrel	7	13	308	Weld Repair	Hugo-8/28/06	Reed	30		9/6/06	9/6/06	

QUAD	D&B NO.	TANK SECTION	ROW	Plate # or V DROP	Weston FLAW #	PATCH TYPE/ Weld Repair	WELDER & Date	Person in Basket	TIME	COMMENTS	DATE OF		
											DYE CHEC	VAC BOX	COATING
D	497	Barrel	7	13	309	Weld Repair	Hugo-8/28/06	Reed	30		9/6/06	9/6/06	
D	498	Barrel	9	13	310	Weld Repair	Hugo-8/28/06	Reed	40		9/7/06	9/7/06	
D	499	Barrel	12	13	311	Weld Repair	Hugo-8/28/06	Reed	25		9/7/06	9/7/06	
D	500	Barrel	12	13	312	Weld Repair	Hugo-8/29/06	Reed	30		9/14/06	9/14/06	
D	501	Barrel	28	14	327	Weld Repair	Hugo-8/14/06	Reed	25		8/31/06	8/31/06	
D	502	Barrel	28	14	328	Weld Repair	Hugo-8/14/06	Reed	25		8/31/06	8/31/06	
D	503	Barrel	28	14	331	Weld Repair	Hugo-8/14/06	Reed	25		8/31/06	8/31/06	
D	504	Barrel	2	14	336	Weld Repair	Hugo-8/22/06	Reed	30		9/14/06	9/14/06	
D	505	Barrel	7	14	338	Weld Repair	Hugo-8/16/06	Reed	30		9/6/06	9/6/06	
D	506	Barrel	12	14	339	Weld Repair	Hugo-8/29/06	Reed	20		9/14/06	9/14/06	
D	507	Barrel	12	14	340	Weld Repair	Hugo-8/29/06	Reed	20		9/7/06	9/7/06	
D	508	Barrel	12	14	341	Weld Repair	Hugo-8/29/06	Reed	30		9/7/06	9/7/06	
D	509	Barrel	12	14	343	Weld Repair	Hugo-8/29/06	Reed	25		9/7/06	9/7/06	



QUAD	D&B NO.	TANK SECTION	ROW	Plate # or V DROP	Weston FLAW #	PATCH TYPE/ Weld Repair	WELDER & Date	Person in Basket	TIME	COMMENTS	DATE OF		
											DYE CHEC	VAC BOX	COATING
D	510	Barrel	28	15	345	Weld Repair	Hugo-8/14/06	Reed	25		8/31/06	8/31/06	
D	511	Barrel	28	15	346	Weld Repair	Hugo-8/14/06	Reed	25		8/31/06	8/31/06	
D	512	Barrel	28	15	347	Weld Repair	Hugo-8/14/06	Reed	30		8/31/06	8/31/06	
D	513	Barrel	23	15	349	Weld Repair	Hugo-8/22/06	Reed	25		9/7/06	9/7/06	
D	514	Barrel	1	15	376	Weld Repair	Hugo-8/15/06	Reed	35		8/30/06	8/30/06	
D	515	Barrel	3	15	377	Weld Repair	Hugo-8/15/06	Reed	30		8/30/06	8/30/06	
D	516	Barrel	3	15	378	Weld Repair	Hugo-8/15/06	Reed	25		8/30/06	8/30/06	
D	517	Barrel	3	15	379	Weld Repair	Hugo-8/15/06	Reed	40		8/30/06	8/30/06	
D	518	Barrel	3	15	380	Weld Repair	Hugo-8/15/06	Reed	40	Done with 517	8/30/06	8/30/06	
D	519	Barrel	3	15	381	Weld Repair	Hugo-8/15/06	Reed	25		8/30/06	8/30/06	
D	520	Barrel	3	15	382	Weld Repair	Hugo-8/15/06	Reed	25		8/30/06	8/30/06	
D	521	Barrel	3	15	383	Weld Repair	Hugo-8/15/06	Reed	25		8/30/06	8/30/06	
D	522	Barrel	5	15	386	Weld Repair	Hugo-8/28/06	Reed	25		9/6/06	9/6/06	

QUAD	D&B NO.	TANK SECTION	ROW	Plate # or V DROP	Weston FLAW #	PATCH TYPE/ Weld Repair	WELDER & Date	Person in Basket	TIME	COMMENTS	DATE OF		
											DYE CHEC	VAC BOX	COATING
D	523	Barrel	7	15	387	Weld Repair	Hugo-8/16/06	Reed	25		9/6/06	9/6/06	
D	524	Barrel	7	15	388	Weld Repair	Hugo-8/16/06	Reed	25		9/6/06	9/6/06	
D	525	Barrel	2	16	390	Weld Repair	Hugo-8/8/06	Calvin	20		9/14/06	9/14/06	
D	526	Barrel	4	16	392	Weld Repair	Hugo-8/16/06	Reed	30		9/6/06	9/6/06	
D	527	Barrel	4	16	393	Weld Repair	Hugo-8/16/06	Reed	20		9/6/06	9/6/06	
D	528	Barrel	5	16	394	Weld Repair	Hugo-8/16/06	Reed	30		9/6/06	9/6/06	
D	529	Barrel	5	16	395	Weld Repair	Hugo-8/16/06	Reed	30		9/6/06	9/6/06	
D	530	Barrel	6	16	396	Weld Repair	Hugo-8/16/06	Reed	30		9/6/06	9/6/06	
D	531	Barrel	8	16	398	Weld Repair	Hugo-8/17/06	Reed	30		9/7/06	9/7/06	
D	532	Barrel	19	16	403	Weld Repair	Hugo-8/21/06	Reed	25		9/7/06	9/7/06	
D	533	Barrel	19	16	404	Weld Repair	Hugo-8/21/06	Reed	30		9/7/06	9/7/06	
D	534	Barrel	26	16	405	Weld Repair	Hugo-8/21/06	Reed	30		9/5/06	9/5/06	
D	535	Barrel	26	16	406	Weld Repair	Hugo-8/22/06	Reed	25		9/5/06	9/5/06	

QUAD	D&B NO.	TANK SECTION	ROW	Plate # or V DROP	Weston FLAW #	PATCH TYPE/ Weld Repair	WELDER & Date	Person in Basket	TIME	COMMENTS	DATE OF		
											DYE CHEC	VAC BOX	COATING
D	536	Barrel	28	16	407	Weld Repair	Hugo-8/14/06	Reed	25		8/31/06	8/31/06	
D	537	Barrel	28	16	410	Weld Repair	Hugo-8/14/06	Reed	25		8/31/06	8/31/06	
D	538	Barrel	9	17	411	Weld Repair	Hugo-8/17/06	Reed	25		9/7/06	9/7/06	
D	539	Barrel	9	17	412	Weld Repair	Hugo-8/17/06	Reed	25		9/7/06	9/7/06	
D	540	Barrel	10	17	413	Weld Repair	Hugo-8/17/06	Reed	30		9/7/06	9/7/06	
D	541	Barrel	10	17	414	Weld Repair	Hugo-8/17/06	Reed	25		9/7/06	9/7/06	
D	542	Barrel	12	17	416	Weld Repair	Hugo-8/17/06	Reed	25		9/7/06	9/7/06	
D	543	Barrel	19	17	418	Weld Repair	Hugo-8/17/06	Reed	25		9/7/06	9/7/06	
D	544	Barrel	19	17	419	Weld Repair	Hugo-8/21/06	Reed	30		9/15/06	9/15/06	
D	545	Barrel	22	17	424	Weld Repair	Hugo-8/21/06	Reed	25		9/15/06	9/15/06	
D	546	Barrel	26	17	425	Weld Repair	Hugo-8/17/06	Reed	25		9/5/06	9/5/06	
D	547	Barrel	4	17	444	Weld Repair	Hugo-8/16/06	Reed	25		8/30/06	8/30/06	
D	548	Barrel	4	17	445	Weld Repair	Hugo-8/16/06	Reed	25		8/30/06	8/30/06	

QUAD	D&B NO.	TANK SECTION	ROW	Plate # or V DROP	Weston FLAW #	PATCH TYPE/ Weld Repair	WELDER & Date	Person in Basket	TIME	COMMENTS	DATE OF		
											DYE CHEC	VAC BOX	COATING
D	549	Barrel	4	17	446	Weld Repair	Hugo-8/16/06	Reed	25		8/30/06	8/30/06	
D	550	Barrel	4	17	447	Weld Repair	Hugo-8/16/06	Reed	30		8/30/06	8/30/06	
D	551	Barrel	5	17	448	Weld Repair	Hugo-8/16/06	Reed	30		9/6/06	9/6/06	
D	552	Barrel	5	17	449	Weld Repair	Hugo-8/16/06	Reed	30		9/6/06	9/6/06	
D	553	Barrel	5	17	450	Weld Repair	Hugo-8/21/06	Reed	30		9/14/06	9/14/06	
D	554	Barrel	5	17	451	Weld Repair	Hugo-8/21/06	Reed	30		9/6/06	9/6/06	
D	555	Barrel	7	17	452	Weld Repair	Hugo-8/16/06	Reed	30		9/6/06	9/6/06	
D	556	Barrel	7	17	453	Weld Repair	Hugo-8/16/06	Reed	20		9/6/06	9/6/06	
D	557	Barrel	7	17	454	Weld Repair	Hugo-8/16/06	Reed	30		9/6/06	9/6/06	
D	558	Barrel	2	18	458	Weld Repair	Hugo-8/17/06	Reed	30		8/30/06	8/30/06	
D	559	Barrel	3	18	460	Weld Repair	Hugo-8/17/06	Reed	30		9/6/06	9/6/06	
D	560	Barrel	3	18	461	Weld Repair	Hugo-8/17/06	Reed	25		9/14/06	9/14/06	
D	561	Barrel	6	18	462	Weld Repair	Hugo-8/17/06	Reed	30		9/14/06	9/14/06	

QUAD	D&B NO.	TANK SECTION	ROW	Plate # or V DROP	Weston FLAW #	PATCH TYPE/ Weld Repair	WELDER & Date	Person in Basket	TIME	COMMENTS	DATE OF		
											DYE CHEC	VAC BOX	COATING
D	562	Barrel	6	18	463	Weld Repair	Hugo-8/17/06	Reed	30		9/6/06	9/6/06	
D	563	Barrel	6	18	464	Weld Repair	Hugo-8/17/06	Reed	30		9/6/06	9/6/06	
D	564	Barrel	8	18	465	Weld Repair	Hugo-8/17/06	Reed	30		9/7/06	9/7/06	
D	565	Barrel	8	18	467	Weld Repair	Hugo-8/17/06	Reed	35		9/14/06	9/14/06	
D	566	Barrel	18	18	469	Weld Repair	Hugo-8/21/06	Reed	30		9/15/06	9/15/06	
D	567	Barrel	18	18	470	Weld Repair	Hugo-8/21/06	Reed	25		9/7/06	9/7/06	
D	568	Upper Dome	A	A-31	588	Weld Repair	Hugo-8/8/06	Calvin	30		9/14/06	9/14/06	

QUAD	D&B NO.	TANK SECTION	ROW	Plate # or V DROP	Weston FLAW #	Remove Nozzle	WELDER & Date	Person in Basket	Time (Min)	COMMENTS	DATE OF		
											DYE CHEC	VAC BOX	COATING
A	100	Extension	E-4	15	352	8" round	Philip-6/22/06	Taylor	60		8/23/06	8/23/06	9/13/06
A	101	Barrel	2	15	355	8" round	Philip-6/22/06	Taylor	70		7/19/06	7/19/06	
A	102	Extension	E-3	13	529	8" round	Philip-6/22/06	Taylor	100		7/19/06	7/19/06	
A	103	Extension	E-3	14	530	8" round	Philip-6/22/06	Taylor	75		7/19/06	7/19/06	
A	104	Extension	E-3	16	574	8" round	Philip-6/22/06	Taylor	80		8/23/06	8/23/06	9/13/06
A	105	Upper Dome	A	A-36	617	8" round	Philip-6/23/06	Reed	50		7/31/06	7/31/06	9/13/06
A	106	Extension	E-3	18	646	8" x 10" round-sketch	Philip-6/29/06	Reed	85		8/17/06	8/17/06	
A	107	Extension	E-3	19	647	8" x 14" round-sketch	Philip-7/18/06		150	1 mors pass on BTM	10/11/06	10/11/06	
A	same as 107	Extension	E-3	19	648	Repair with flaw No. 647	Philip-7/18/06						
A/B	108	Extension	E-4	11	220	8" round	Philip-6/29/06	Reed	80		7/19/06	7/19/06	
B	109	Extension	E-4	1	54	8" round	Philip-6/29/06	Reed	75		7/19/06	7/19/06	
B	110	Extension	E-4	5	111	8" round	Philip-6/27 & 29/06	Reed	100		8/23/06	8/23/06	
B	111	Extension	E-3	1	428	8" round	Philip-6/29/06	Reed	60		7/19/06	7/19/06	

QUAD	D&B NO.	TANK SECTION	ROW	Plate # or V DROP	Weston FLAW #	Remove Nozzle	WELDER & Date	Person in Basket	Time (Min)	COMMENTS	DATE OF		
											DYE CHEC	VAC BOX	COATING
B	112	Extension	E-3	3	433	8" round	Philip-6/23/06	Reed	45		7/19/06	7/19/06	
B	113	Extension	E-3	3	434	8" round	Philip-6/23/06	Reed	75		7/19/06	7/19/06	
B	114	Extension	E-3	5	439	8" round	Philip-6/27/06	Todd	130		7/19/06	7/19/06	
B	115	Extension	E-3	7	516	8" round	Philip-6/27/06	Todd	65		7/19/06	7/19/06	
B	116	Extension	E-3	9	519	8" round	Philip-6/27/06	Todd	65		7/19/06	7/19/06	
B	117	Extension	E-3	10	521	8" round	Philip-6/27/06	Todd	45		7/19/06	7/19/06	
B	118	Upper Dome	B	B-16	628	8" round	Philip-6/29/06	Reed	65		8/23/06	8/23/06	9/13/06
C	119	Extension	E-3	1	475	8" round	Hugo-7/6/06	Todd	70		8/31/06	8/31/06	
C	120	Extension	E-3	1	476	8" round	Hugo-7/6/06	Todd	65		7/7/06	7/7/06	
C	121	Extension	E-3	1	477	8" round	Hugo-7/6/06	Todd	70		7/7/06	7/7/06	
C	122	Extension	E-3	2	480	8" round	Hugo-7/6/06	Todd	50		7/7/06	7/7/06	
C	123	Extension	E-3	4	486	8" round	Hugo-7/5/06	Todd	45		9/5/06	9/5/06	
C	124	Extension	E-3	5	489	8" round	Hugo-7/5/06	Todd	55		7/7/06	7/7/06	

QUAD	D&B NO.	TANK SECTION	ROW	Plate # or V DROP	Weston FLAW #	Remove Nozzle	WELDER & Date	Person in Basket	Time (Min)	COMMENTS	DATE OF		
											DYE CHEC	VAC BOX	COATING
C	125	Extension	E-3	6	491	8" round	Hugo-7/5/06	Todd	90		7/7/06	7/7/06	
C	126	Extension	E-3	6	492	8" round	Hugo-7/5/06	Todd	75		7/7/06	7/7/06	
C	127	Extension	E-3	7	501	8" round	Hugo-7/5/06	Todd	45		7/7/06	7/7/06	
C	128	Extension	E-3	7	502	8" round	Hugo-7/5/06	Todd	50		7/7/06	7/7/06	
C	129	Extension	E-3	8	503	8" round	Hugo-7/5/06	Todd	45		7/7/06	7/7/06	
C	130	Extension	E-3	8	504	8" round	Hugo-7/5/06	Todd	50		7/7/06	7/7/06	
C	131	Extension	E-3	9	538	8" round	Hugo-7/3/06	Todd	65		9/5/06	9/5/06	
C	132	Extension	E-3	10	539	8" round	Hugo-7/3/06	Todd	45		7/7/06	7/7/06	
C	133	Upper Dome	A	A-72	640	8" round	Philip-7/10/06	Calvin	75		8/24/06	8/24/06	
D	134	Barrel	2	Under-catwalk	61	8" round	Philip-8/28/06	Taylor	70		9/6/06	9/6/06	
D	135	Extension	E-4	Under-catwalk	62	8" round	Philip-8/29/06	Taylor	65		10/9/06	10/9/06	
D	136	Extension	E-4	14	332	8" round	Hugo-7/6/06	Todd	80		8/31/06	8/31/06	
D	137	Barrel	2	14	334	8" round	Hugo-7/6/06	Todd	60		7/7/06	7/7/06	



QUAD	D&B NO.	TANK SECTION	ROW	Plate # or V DROP	Weston FLAW #	Remove Nozzle	WELDER & Date	Person in Basket	Time (Min)	COMMENTS	DATE OF		
											DYE CHEC	VAC BOX	COATING
D	140	Extension	E-3	11	549	8" round	Hugo-7/3/06	Todd	40		7/7/06	7/7/06	
D	141	Extension	E-3	12	550	8" round	Hugo-7/3/06	Todd	125	Delays-Welding mask & eye glasses broke	7/7/06	7/7/06	
D	142	Extension	E-3	12	551	8" round	Hugo-6/29/06	Reed	75		7/7/06	7/7/06	
D	143	Extension	E-3	13	557	8" round	Hugo-6/29/06	Reed	60		9/5/06	9/5/06	
D	144	Extension	E-3	13	559	8" round	Hugo-6/29/06	Reed	45		7/7/06	7/7/06	
D	145	Extension	E-3	14	562	8" round	Hugo-6/29/06	Reed	60		7/7/06	7/7/06	
D	146	Extension	E-3	15	566	8" round	Hugo-6/29/06	Reed	45		7/7/06	7/7/06	
D	147	Extension	E-3	17	584	8" round	Hugo-6/29/06	Reed	40		7/7/06	7/7/06	
D	148	Upper Dome	A	A-39	613	8" round	Hugo-7/6/06	Todd	70		9/5/06	9/5/06	
D	149	Upper Dome	A	A-51	639	8" round	Hugo-7/10/06	Calvin	60		8/24/06	8/24/06	
D	150	Upper Dome	E3	11	547	8" round-see dan	Hugo-8/23/06	Reed	85	See Dan-Don't Do--8" Tombstone	10/11/06	10/11/06	
D	151	Upper Dome	E3	11	548	8" round	Hugo-7/3/06	Todd	40		7/7/06	7/7/06	

QUAD	D&B NO.	TANK SECTION	ROW	Plate # or V DROP	Weston FLAW #	Remove Patch Plates	WELDER & Date	Person in Basket	Time (Min)	COMMENTS	DATE OF		
											DYE CHEC	VAC BOX	COATING
D	151B	Barrel	28	12	288	Remove existing patch plate, 6" x 1/4" round patch plate	Hugo-8/22/06	Reed	65		9/5/06	9/5/06	
D	152	Barrel	28	14	329	Remove existing patch plate, 6" x 1/4" round patch plate	Hugo-8/22/06	Reed	45		9/15/06	9/15/06	
D	same as 152	Barrel	28	14	330	Repair with flaw No. 329							
QUAD	D&B NO.	TANK SECTION	ROW	Plate # or V DROP	Weston FLAW #	COATING REPAIR	WELDER & Date	Person in Basket	Time (Min)	COMMENTS	DATE OF		
											DYE CHEC	VAC BOX	COATING
A	153	Upper Dome	B	B-35	633	Coating Repair Only							
B	154	Extension	E-3	2	430	Coating Repair Only							
B	155	Extension	E-1	10	661	Coating Repair Only							
B	156	Extension	E-2	10	664	Coating Repair Only							
B	157	Extension	E-2	10	665	Coating Repair Only							
B	158	Extension	E-3	10	668	Coating Repair Only							
C	159	Upper Dome	B	B-63	595	Coating Repair Only							
C	160	Upper Dome	B	B-62	597	Coating Repair Only							

QUAD	D&B NO.	TANK SECTION	ROW	Plate # or V DROP	Weston FLAW #	MT	WELDER & Date	Person in Basket	Time (Min)	COMMENTS	DATE OF		
											TEST		COATING
A	161	Extension	E-3	17	678	Perform MT, see sketch					10/9/06		
A	162	Extension	E-3	18	679	Perform MT, see sketch					10/9/06		

QUAD	D&B NO.	TANK SECTION	ROW	Plate # or V DROP	Weston FLAW #	PATCH TYPE	WELDER	TIME	COMMENTS	DATE OF	
										VAC BOX	COATING
A	200	Barrel	1	Under catwalk	49	Vac Box Test				9/28/06	
A	201	Extension	E-4	12	225	Vac Box Test				9/28/06	
A	202	Extension	E-4	12	226	Vac Box Test				9/28/06	
A	203	Extension	E-4	12	227	Vac Box Test				9/28/06	
A	204	Extension	E-4	12	228	Vac Box Test				9/28/06	
A	205	Barrel	8 & 9	12	236	Vac Box Test				9/28/06	
A	206	Barrel	20	13	314	Vac Box Test				9/28/06	
A	207	Barrel	1	16	365	Vac Box Test				9/28/06	
A	208	Barrel	1	16	367	Vac Box Test				9/28/06	
A	209	Extension	E-4	17	368	Vac Box Test				9/28/06	
B	210	Barrel	1	3	77	Vac Box Test				9/28/06	
B	211	Barrel	1	4	109	Vac Box Test				9/28/06	

QUAD	D&B NO.	TANK SECTION	ROW	Plate # or V DROP	Weston FLAW #	PATCH TYPE	WELDER	TIME	COMMENTS	DATE OF	
										VAC BOX	COATING
B	212	Extension	E-4	4	110	Vac Box Test				9/28/06	
B	213	Extension	E-4	6	121	Vac Box Test				9/28/06	
B	214	Extension	E-4	6	122	Vac Box Test				9/28/06	
B	215	Barrel	1	6	123	Vac Box Test				9/28/06	
B	216	Barrel	1	6	124	Vac Box Test				9/28/06	
B	217	Barrel	9	7	157	Vac Box Test				9/28/06	
B	218	Barrel	10	7	161	Vac Box Test				9/28/06	
B	219	Extension	E-4	8	167	Vac Box Test				9/28/06	
B	220	Barrel	1	9	194	Vac Box Test				9/28/06	
B	221	Barrel	9	9	199	Vac Box Test				9/28/06	
B	222	Barrel	11	10	210	Vac Box Test				9/28/06	
B	223	Barrel	7	10	212	Vac Box Test				9/28/06	

QUAD	D&B NO.	TANK SECTION	ROW	Plate # or V DROP	Weston FLAW #	PATCH TYPE	WELDER	TIME	COMMENTS	DATE OF	
										VAC BOX	COATING
B	224	Extension	E-1	3	431	Vac Box Test				9/28/06	
B	225	Extension	E-2	10	522	Vac Box Test					
C	226	Barrel	1 & 2	3	95	Vac Box Test				9/28/06	
C	227	Extension	E-4	3	97	Vac Box Test				9/28/06	
C	228	Extension	E-4	4	98	Vac Box Test				9/28/06	
C	229	Barrel	23	4	141	Vac Box Test				9/28/06	
C	230	Extension	E-2	9	534	Vac Box Test				9/28/06	
C	231	Extension	E-2	9	535	Vac Box Test				9/28/06	
C	232	Upper Dome	A	A-50	543	Vac Box Test				9/28/06	
C	233	Upper Dome	B	B-72	589	Vac Box Test				9/28/06	
C	234	Upper Dome	B	B-71	590	Vac Box Test				9/28/06	
C	235	Upper Dome	B	B-69	592	Vac Box Test				9/28/06	

QUAD	D&B NO.	TANK SECTION	ROW	Plate # or V DROP	Weston FLAW #	PATCH TYPE	WELDER	TIME	COMMENTS	DATE OF	
										VAC BOX	COATING
C	236	Upper Dome	B	B-68	593	Vac Box Test				9/28/06	
D	237	Barrel	12	Undercat	59	Vac Box Test				9/28/06	
D	238	Barrel	5	Undercat	60	Vac Box Test				9/28/06	
D	239	Barrel	21	12	271	Vac Box Test				9/28/06	
D	240	Barrel	28	11	283	Vac Box Test				9/28/06	
D	241	Barrel	26	12	289	Vac Box Test				9/28/06	
D	242	Extension	E-4	14	333	Vac Box Test				9/28/06	
D	243	Barrel	28	15	344	Vac Box Test				9/28/06	
D	244	Extension	E-4	15	374	Vac Box Test				9/28/06	
D	245	Barrel	1	15	375	Vac Box Test				9/28/06	
D	246	Barrel	6	16	397	Vac Box Test				9/28/06	
D	247	Barrel	28	16	408	Vac Box Test				9/28/06	

QUAD	D&B NO.	TANK SECTION	ROW	Plate # or V DROP	Weston FLAW #	PATCH TYPE	WELDER	TIME	COMMENTS	DATE OF	
										VAC BOX	COATING
D	248	Barrel	28	16	409	Vac Box Test				9/28/06	
D	249	Barrel	2	18	457	Vac Box Test				9/28/06	
D	250	Barrel	3	18	459	Vac Box Test				9/28/06	
D	251	Barrel	8	18	466	Vac Box Test					
D	252	Extension	E-2	12	553	Vac Box Test				9/28/06	
D	253	Upper Domy	A	A-43	554	Vac Box Test				9/28/06	
D	254	Upper Domy	A	A-43	555	Vac Box Test				9/28/06	
D	255	Upper Domy	A	A-44	556	Vac Box Test				9/28/06	
D	256	Barrel	16 & 17	18	681	Vac Box Test					



## Section 2

### Removal of unused anchors, clips, and angles at tank bottom

Unused anchors, clips, and angles were removed from the tank bottom as recommended by Weston Solutions. Areas where these attachments were removed were ground smooth and vacuum box tested (if removed from bottom plates).



Photo

Tank 6 bottom after anchors and clips were removed. Also note where the elevator landing platform and steps were removed from the tower structure.

## Section 3

### Replacement of 18" line supports at tank bottom

The existing 18" line supports were removed and replaced as recommended by Weston Solutions. Two existing supports were removed, areas where they attached to the tank were ground smooth and vacuum box tested.

One new support was installed as shown in the photograph below. Reinforcing plates attached to the tank bottom were PT'd and vacuum box tested.



**CONTRACT NUMBER N62742-03-C-1402  
CLEAN AND REPAIR TANKS 1, 6, 15, AND 16, AT RED HILL  
FLEET AND INDUSTRIAL SUPPLY CENTER, PEARL HARBOR, HAWAII**



## Section 4

### Repair of 32" line internal circumferential joints

Approximately forty feet of the 32" line internal circumferential butt weld joints were weld repaired to correct lack of penetration conditions noted in the API 653 Inspection Report.

View looking down from tank interior





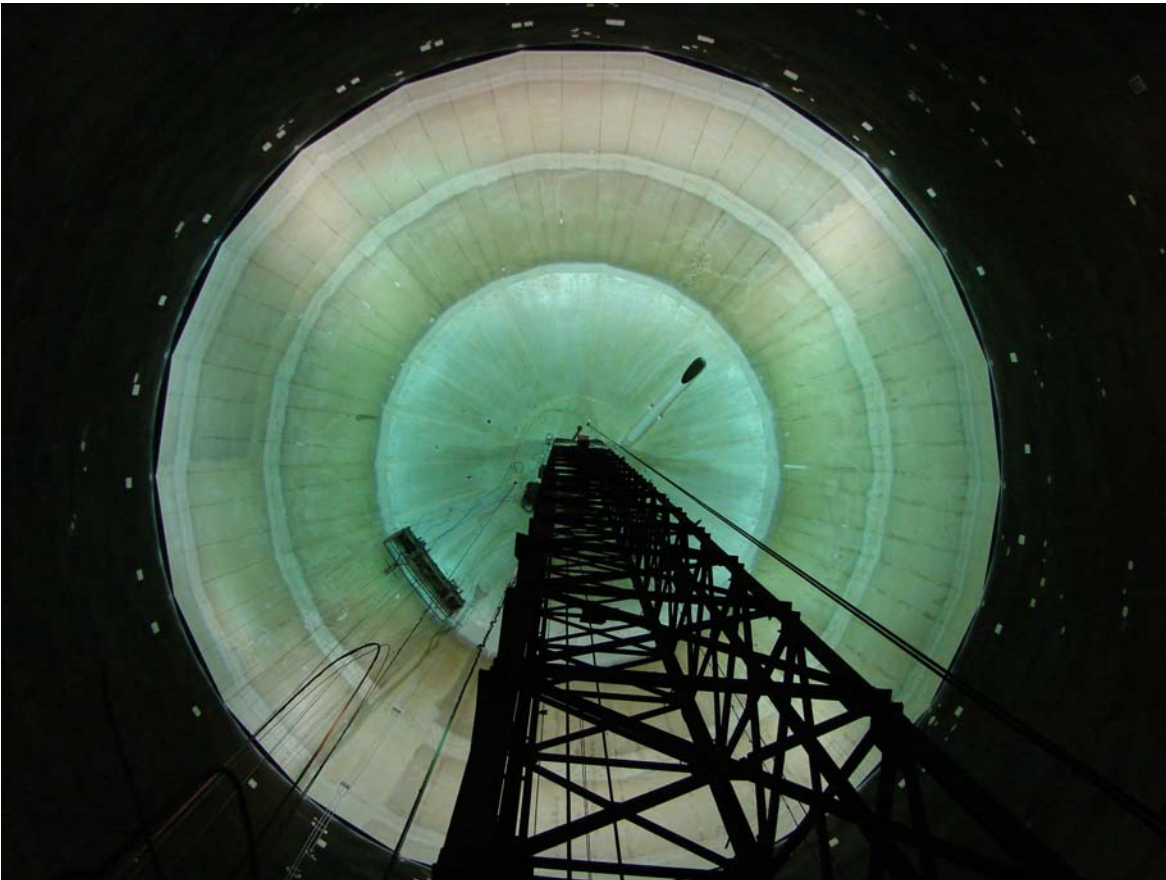
## Section 5

### Coating repairs

Coating repairs were completed using the government approved variance single coat paint system with surface preparation done in accordance with the coating manufacturers' recommendations. The lower dome was coated using a three coat system approved by the government.

Coating repairs were completed in the following areas:

- Patch plates and insert repairs
- Weld flaw repairs
- Grout nozzles
- Expansion joint areas
- Areas of the Upper dome
- Tank Bottom, Discharge line, and Lower dome



**CONTRACT NUMBER N62742-03-C-1402  
CLEAN AND REPAIR TANKS 1, 6, 15, AND 16, AT RED HILL  
FLEET AND INDUSTRIAL SUPPLY CENTER, PEARL HARBOR, HAWAII**

The tank bottom and lower dome were recoated as directed by the government to replace the existing failed coating.



A government approved variance three coat paint system was applied after surfaces were abrasive blasted and prepared in accordance with the coating system manufacturers' recommendations.

## Section 6

### Other repairs including slop line, tower, etc.

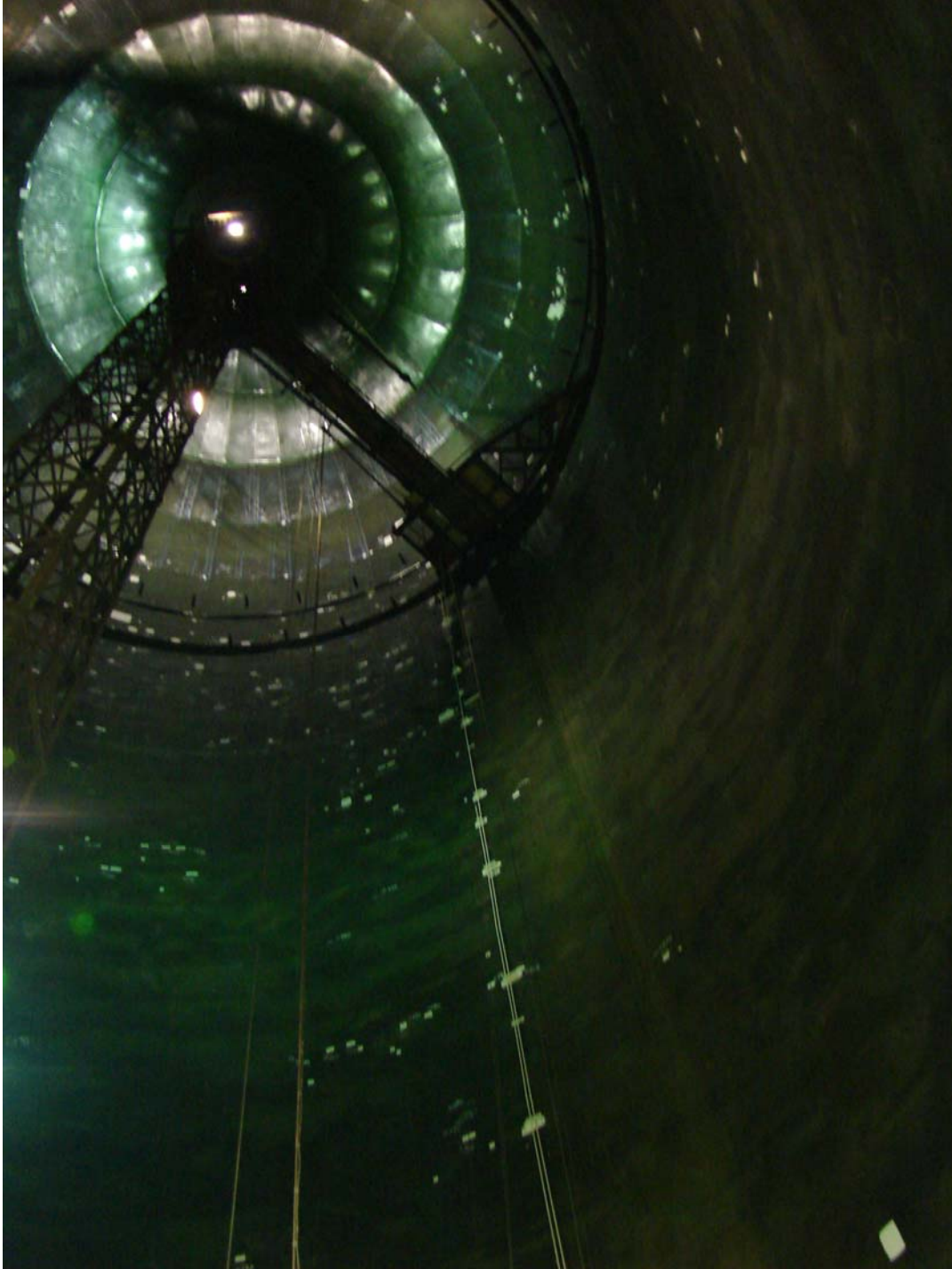
Other repairs were completed in tank 6 as directed by the government and based on the results of contract specified testing and inspection, differing site conditions, and user requests.

1. Removal, repair, reinstallation and testing of the 6" slop line – The existing slop line was removed as directed by the government. The flexible stainless steel portion of the line was found to be leaking at weld joints and was replaced with new 5" diameter flexible stainless steel tubing. The existing 6" carbon steel pipe was replaced with new seamless carbon steel pipe and new flange installed in the lower tunnel.
2. Removal and replacement of the existing stairway in the central tower to allow installation of scaffold boom, and repair of hand rails.
3. Structural repairs to the central tower (2 weld repairs and replacement of 9 fasteners).
4. Upgrade of sample lines in the lower tunnel including installation of 5 sample tubes, ten valves, and 5 spigots. Installation of new ¾" schedule 80 carbon steel lines from the lower tunnel to the 200 foot level inside the tank.
5. Removal of the counterweight tube, float, tape, guy wires, and attachments.
6. Removal of central tower elevator cage and steps & landing at the tower base.
7. Installation of datum plate (for Weston Solutions).

Photographs of these other repairs are included in the appendix.

CONTRACT NUMBER N62742-03-C-1402  
CLEAN AND REPAIR TANKS 1, 6, 15, AND 16, AT RED HILL  
FLEET AND INDUSTRIAL SUPPLY CENTER, PEARL HARBOR, HAWAII

## Appendix





**CONTRACT NUMBER N62742-03-C-1402  
CLEAN AND REPAIR TANKS 1, 6, 15, AND 16, AT RED HILL  
FLEET AND INDUSTRIAL SUPPLY CENTER, PEARL HARBOR, HAWAII**



New Slop Line Lower Tunnel

**CONTRACT NUMBER N62742-03-C-1402  
CLEAN AND REPAIR TANKS 1, 6, 15, AND 16, AT RED HILL  
FLEET AND INDUSTRIAL SUPPLY CENTER, PEARL HARBOR, HAWAII**



New Slop Line Lower Tunnel



From Inside Tank Looking Down

**CONTRACT NUMBER N62742-03-C-1402  
CLEAN AND REPAIR TANKS 1, 6, 15, AND 16, AT RED HILL  
FLEET AND INDUSTRIAL SUPPLY CENTER, PEARL HARBOR, HAWAII**



Tower Stair Section Removed & Replaced



**CONTRACT NUMBER N62742-03-C-1402  
CLEAN AND REPAIR TANKS 1, 6, 15, AND 16, AT RED HILL  
FLEET AND INDUSTRIAL SUPPLY CENTER, PEARL HARBOR, HAWAII**



Tower Structural Repairs

**CONTRACT NUMBER N62742-03-C-1402  
CLEAN AND REPAIR TANKS 1, 6, 15, AND 16, AT RED HILL  
FLEET AND INDUSTRIAL SUPPLY CENTER, PEARL HARBOR, HAWAII**



Replaced Fasteners

**CONTRACT NUMBER N62742-03-C-1402  
CLEAN AND REPAIR TANKS 1, 6, 15, AND 16, AT RED HILL  
FLEET AND INDUSTRIAL SUPPLY CENTER, PEARL HARBOR, HAWAII**



New Sample Tubes and Valves

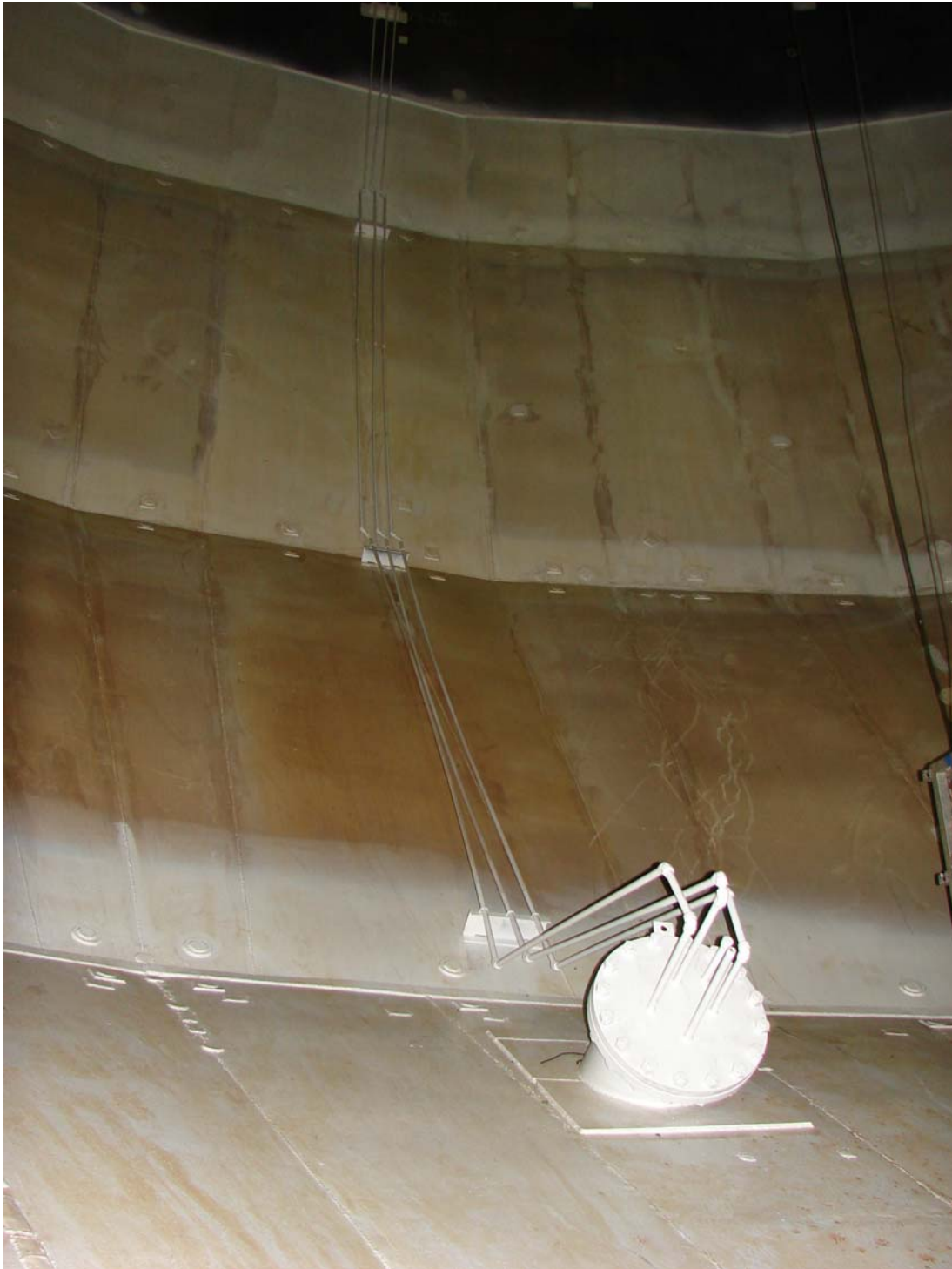


**CONTRACT NUMBER N62742-03-C-1402  
CLEAN AND REPAIR TANKS 1, 6, 15, AND 16, AT RED HILL  
FLEET AND INDUSTRIAL SUPPLY CENTER, PEARL HARBOR, HAWAII**



**New Sample Tubes**

**CONTRACT NUMBER N62742-03-C-1402  
CLEAN AND REPAIR TANKS 1, 6, 15, AND 16, AT RED HILL  
FLEET AND INDUSTRIAL SUPPLY CENTER, PEARL HARBOR, HAWAII**





**CONTRACT NUMBER N62742-03-C-1402  
CLEAN AND REPAIR TANKS 1, 6, 15, AND 16, AT RED HILL  
FLEET AND INDUSTRIAL SUPPLY CENTER, PEARL HARBOR, HAWAII**

NewSampleTubes



**CONTRACT NUMBER N62742-03-C-1402  
CLEAN AND REPAIR TANKS 1, 6, 15, AND 16, AT RED HILL  
FLEET AND INDUSTRIAL SUPPLY CENTER, PEARL HARBOR, HAWAII**

